

Product **Contacts: 8, Female panel mount connector, screwed from front, with single wires, 0.25 mm<sup>2</sup>, PG 9**

Area **M12-A Series 713/763**  
Article number **76 0532 1011 00008-0200**

Illustration	Scale drawing	Contact Arrangement																											
	<p>Ausführung mit Zink Druckgussgehäuse Version with zinc diecasted housing</p>	<table border="1" style="margin: 10px auto;"> <thead> <tr> <th></th> <th>X</th> <th>Y</th> </tr> </thead> <tbody> <tr><td>1</td><td>-2,69</td><td>0,57</td></tr> <tr><td>2</td><td>-0,57</td><td>2,69</td></tr> <tr><td>3</td><td>1,66</td><td>2,20</td></tr> <tr><td>4</td><td>2,75</td><td>0,19</td></tr> <tr><td>5</td><td>1,94</td><td>-1,94</td></tr> <tr><td>6</td><td>-0,19</td><td>-2,75</td></tr> <tr><td>7</td><td>-2,20</td><td>-1,66</td></tr> <tr><td>8</td><td>0,00</td><td>0,00</td></tr> </tbody> </table> <p>1 weiß/white 2 braun/brown 3 grün/green 4 gelb/yellow 5 grau/grey 6 rosa/pink 7 blau/blue 8 rot/red</p> <p style="font-size: small;">Geschirmte Versionen: Schirm auf Gehäuse oder Pin 8 Shielded versions: shield on housing or pin 8</p>		X	Y	1	-2,69	0,57	2	-0,57	2,69	3	1,66	2,20	4	2,75	0,19	5	1,94	-1,94	6	-0,19	-2,75	7	-2,20	-1,66	8	0,00	0,00
	X	Y																											
1	-2,69	0,57																											
2	-0,57	2,69																											
3	1,66	2,20																											
4	2,75	0,19																											
5	1,94	-1,94																											
6	-0,19	-2,75																											
7	-2,20	-1,66																											
8	0,00	0,00																											

**You can find the assembly instruction on the next page.**

## Technical data

### General features

Connector Design	female panel mount connector
Connector locking system	bolted
Termination	Strands
Wire gauge (mm)	0,25 mm <sup>2</sup>
Wire gauge (AWG)	24
Upper temperature	85 °C
Lower temperature	-40 °C

### Electrical parameters

Rated voltage	60 V
Rated impulse voltage	800 V
Pollution degree	3
Overvoltage category	II
Material group	II
Rated current (40°C)	2 A
Volume resistivity	≤ 3 mΩ
EMV compliance	not shielded
Degree of protection	IP68
Mechanical operation	> 100 Mating cycles

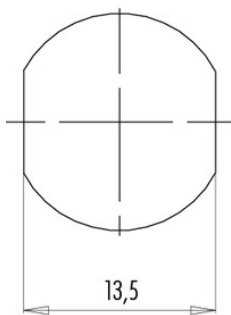
### Material

Material of contact	CuSn (Bronze)
Contact plating	Au (gold)
Material of contact body	PA

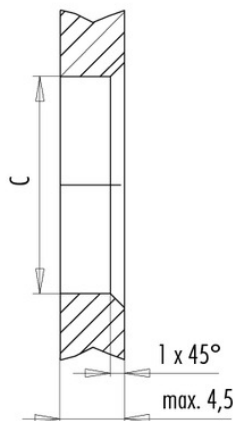
Product **Contacts: 8, Female panel mount connector, screwed from front, with single wires, 0.25 mm<sup>2</sup>, PG 9**  
 Area **M12-A Series 713/763**  
 Article number **76 0532 1011 00008-0200**

### Installation instructions / Mounting cutout

Mit Fläche als Verdrehschutz  
With flats as anti-rotation device



Mit Durchgangsbohrung  
With bore hole



	C
PG 9	15,3
M16x1,5	16,1

Anzugsdrehmoment/Tightening moment

Metallgehäuse/Metal housing 6,25 Nm  
 Kunststoffgehäuse/Plastic housing 3,75 Nm