

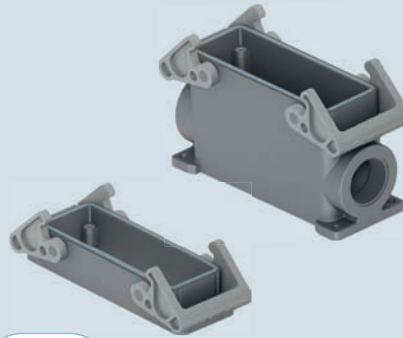


inserts:	page:
CD ..... 64 poles + ⊕	59
CDD ..... 108 poles + ⊕	72
CDS ..... 42 poles + ⊕	81
CSH ..... 24 poles + ⊕	94
CNE, CSE ..... 24 poles + ⊕	107
CCE ..... 24 poles + ⊕	113
CSS ..... 24 poles + ⊕	125
CT, CTSE (16A) * .. 24 poles + ⊕	133
CQE ..... 46 poles + ⊕	141
CQEE ..... 64 poles + ⊕	147
CMCE ..... 10+2 (aux) poles + ⊕	152
CME, CMSH 10+2 (aux) poles + ⊕	153
CMCE ..... 16+2 (aux) poles + ⊕	158
CME ..... 16+2 (aux) poles + ⊕	159
CX ..... 4/8 and 6/6 poles + ⊕	173 and 175
MIXO ..... 6 modules	179-215

\*) only for standard insulating version THIW

insert centre distance: 104 x 27 mm

housings with double lever



VITON®  
gasket

**NEW**

hoods with 4 pegs

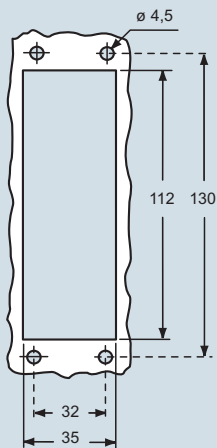


description	part No.	entry M
bulkhead mounting housing with thermoplastic levers	<b>THIW 24</b>	
surface mounting housing with thermoplastic levers	<b>TAPW 24.32</b>	<b>32</b>
surface mounting housing with thermoplastic levers	<b>TAPW 24.40</b>	<b>40</b>
with pegs, side entry		
with pegs, side entry		

part No.	entry M

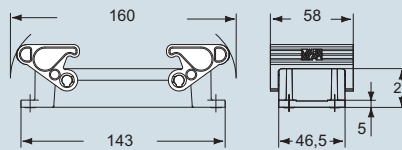
part No.	entry M
<b>TMAO 24.32</b>	<b>32</b>
<b>TMAO 24.40</b>	<b>40</b>
<b>TMAV 24.32</b>	<b>32</b>
<b>TMAV 24.40</b>	<b>40</b>

panel cut-out for bulkhead mounting housing in mm

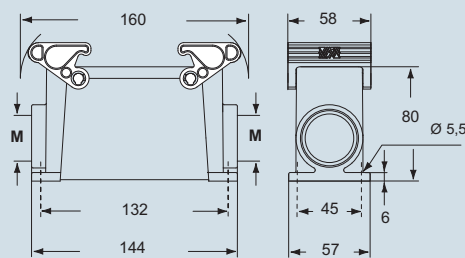


dimensions in mm

**THIW 24**

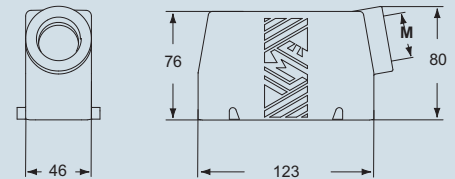


**TAPW 24.32 and TAPW 24.40**

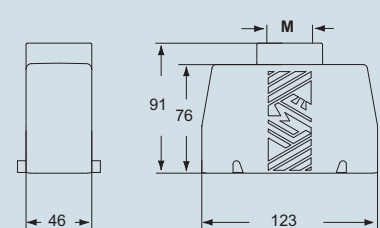


dimensions in mm

**TMAO 24.32 and TMAO 24.40**



**TMAV 24.32 and TMAV 24.40**



The surface mounting, high construction housings are supplied with an open threaded entry and diametrically opposite a closed threaded entry which can be opened by the user if required (with suitable tool).



ambient temperature limits -40 °C / +90 °C

dimensions shown are not binding and may be changed without notice

T-TYPE / W - size 104.27

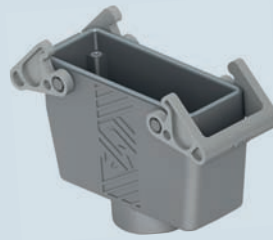


inserts:	page:
CD ..... 64 poles + ⊕	59
CDD ..... 108 poles + ⊕	72
CDS ..... 42 poles + ⊕	81
CSH ..... 24 poles + ⊕	94
CNE, CSE ..... 24 poles + ⊕	107
CCE ..... 24 poles + ⊕	113
CSS ..... 24 poles + ⊕	125
CT, CTSE (16A) *) .. 24 poles + ⊕	133
CQE ..... 46 poles + ⊕	141
CQEE ..... 64 poles + ⊕	147
CMCE ..... 10+2 (aux) poles + ⊕	152
CME, CMSH 10+2 (aux) poles + ⊕	153
CMCE ..... 16+2 (aux) poles + ⊕	158
CME ..... 16+2 (aux) poles + ⊕	159
CX ..... 4/8 and 6/6 poles + ⊕	173 and 175
MIXO ..... 6 modules	179-215

\*) only for standard insulating version THIW

insert centre distance: **104 x 27 mm**

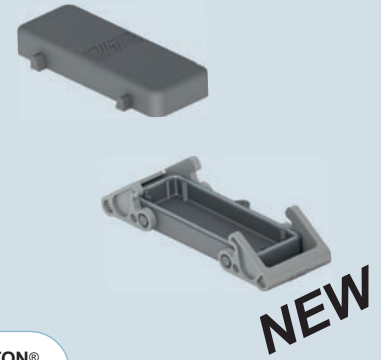
**hoods with double lever top entry**



VITON® gasket

**NEW**

**covers**



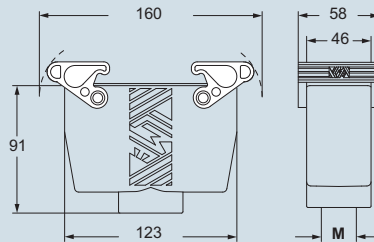
VITON® gasket

**NEW**

description	part No.	entry M	part No. (with eyelet)	part No. (with loop)
with thermoplastic levers and gasket	<b>TAVW 24 G32</b>	<b>32</b>		
with thermoplastic levers and gasket	<b>TAVW 24 G40</b>	<b>40</b>		
with 4 pegs			<b>TCHC 24</b>	<b>TCHC 24 S</b>
with 2 thermoplastic levers and gasket				<b>THCW 24 G</b>

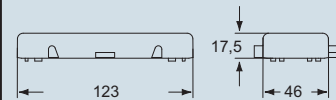
dimensions in mm

**TAVW 24 G32 and TAVW 24 G40**

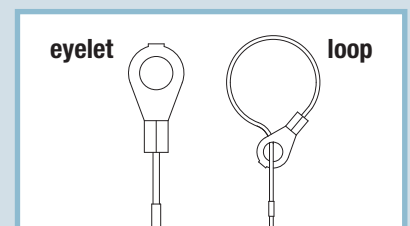
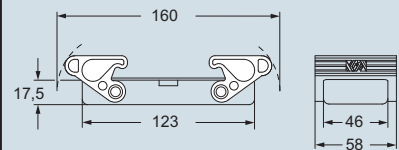


dimensions in mm

**TCHC 24 (S)**



**THCW 24 G**



ambient temperature limits -40 °C / +90 °C

dimensions shown are not binding and may be changed without notice

T-TYPE / W - size 104.27