

enclosures:
size "21.21"

page:

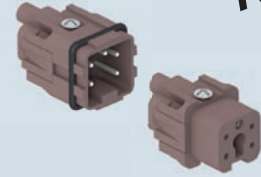
for 180 °C 397

inserts, 3 poles + ⊕
screw terminal connections

inserts, 4 poles + ⊕
screw terminal connections

NEW

NEW



silver plated contacts

180 °C

silver plated contacts

180 °C

description

part No.

part No.

use in temperatures up to 180 °C
female inserts with female contacts ¹⁾, brown
male inserts with male contacts, brown

CKF 03 RY
CKM 03 RY

use in temperatures up to 180 °C
female inserts with female contacts ¹⁾, brown
male inserts with male contacts, brown

CKF 04 RY
CKM 04 RY

¹⁾ the female inserts can be mounted into the straight bulkhead housings CK I from the rear

dimensions in mm

dimensions in mm

- characteristics according to EN 61984:

10A 230/400V 4kV 3
10A 400/690V 4kV 2

- UL, CSA, CCC *, GL, EAC certified

* CQC certification being applied for

- rated voltage according to UL/CSA: 600V

- insulation resistance: ≥ 10 GΩ

- ambient temperature limit: -40 °C ... +180 °C

- are made of self-extinguishing thermoplastic resin UL 94 V0

- mechanical life: ≥ 500 cycles

- contact resistance: ≤ 1 mΩ

- for maximum current load, see the following load curves inserts, for more information see page 557

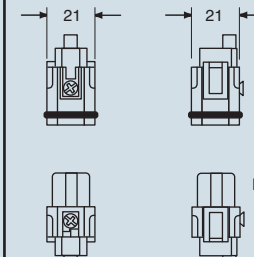
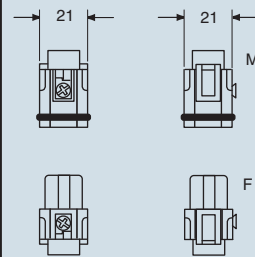
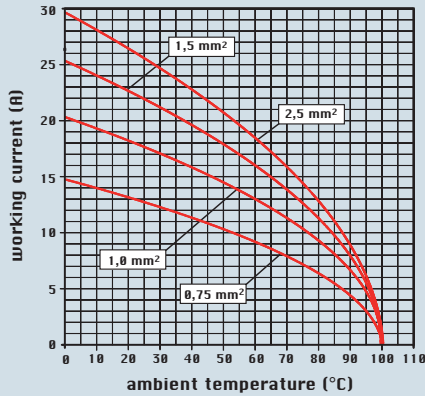


diagram CK...RY 03 poles



contacts side (front view)



contacts side (front view)

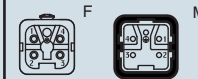
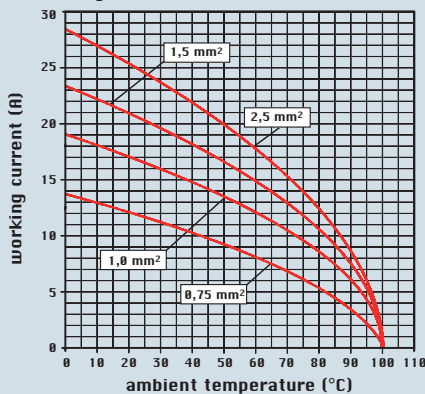


diagram CK...RY 04 poles



- inserts for connectors with the following sections:
0,75 - 2,5 mm² - AWG 18 - 14
- conductors stripping length: 6 mm
- terminal screw torque: 0,5 Nm (4.4 lb.in), for more information see page 34 and 35

- inserts for connectors with the following sections:
0,75 - 2,5 mm² - AWG 18 - 14
- conductors stripping length: 6 mm
- terminal screw torque: 0,5 Nm (4.4 lb.in), for more information see page 34 and 35

dimensions shown are not binding
and may be changed without notice