

Product **Contacts: 12, Female panel mount connector, screwed from front, with single wires, 0.14 mm², M16 x 1.5**

Area **M12-A Series 713/763**
Article number **76 0632 1111 00012-0200**

Illustration	Scale drawing	Contact Arrangement																																																				
	<p>Ausführung mit Zink Druckgussgehäuse Version with zinc diecasted housing</p>	<table border="1"> <thead> <tr> <th></th> <th>X</th> <th>Y</th> <th></th> </tr> </thead> <tbody> <tr><td>1</td><td>-2,80</td><td>0,78</td><td>1 braun/brown</td></tr> <tr><td>2</td><td>-0,78</td><td>2,80</td><td>2 blau/blue</td></tr> <tr><td>3</td><td>1,09</td><td>2,69</td><td>3 weiß/white</td></tr> <tr><td>4</td><td>2,51</td><td>1,46</td><td>4 grün/green</td></tr> <tr><td>5</td><td>2,88</td><td>-0,37</td><td>5 rosa/pink</td></tr> <tr><td>6</td><td>2,05</td><td>-2,05</td><td>6 gelb/yellow</td></tr> <tr><td>7</td><td>0,37</td><td>-2,88</td><td>7 schwarz/black</td></tr> <tr><td>8</td><td>-1,46</td><td>-2,51</td><td>8 grau/grey</td></tr> <tr><td>9</td><td>-2,69</td><td>-1,09</td><td>9 rot/red</td></tr> <tr><td>10</td><td>-0,78</td><td>0,78</td><td>10 violett/purple</td></tr> <tr><td>11</td><td>1,06</td><td>0,29</td><td>11 grau/rosa/grey/pink</td></tr> <tr><td>12</td><td>-0,29</td><td>-1,06</td><td>12 rot/blau/red/blue</td></tr> </tbody> </table> <p>Geschirmte Versionen: Schirm auf Gehäuse Shielded versions: shield on housing</p>		X	Y		1	-2,80	0,78	1 braun/brown	2	-0,78	2,80	2 blau/blue	3	1,09	2,69	3 weiß/white	4	2,51	1,46	4 grün/green	5	2,88	-0,37	5 rosa/pink	6	2,05	-2,05	6 gelb/yellow	7	0,37	-2,88	7 schwarz/black	8	-1,46	-2,51	8 grau/grey	9	-2,69	-1,09	9 rot/red	10	-0,78	0,78	10 violett/purple	11	1,06	0,29	11 grau/rosa/grey/pink	12	-0,29	-1,06	12 rot/blau/red/blue
	X	Y																																																				
1	-2,80	0,78	1 braun/brown																																																			
2	-0,78	2,80	2 blau/blue																																																			
3	1,09	2,69	3 weiß/white																																																			
4	2,51	1,46	4 grün/green																																																			
5	2,88	-0,37	5 rosa/pink																																																			
6	2,05	-2,05	6 gelb/yellow																																																			
7	0,37	-2,88	7 schwarz/black																																																			
8	-1,46	-2,51	8 grau/grey																																																			
9	-2,69	-1,09	9 rot/red																																																			
10	-0,78	0,78	10 violett/purple																																																			
11	1,06	0,29	11 grau/rosa/grey/pink																																																			
12	-0,29	-1,06	12 rot/blau/red/blue																																																			

You can find the assembly instruction on the next page.

Technical data

General features

Connector Design	female panel mount connector
Connector locking system	bolted
Termination	Strands
Wire gauge (mm)	0,14 mm ²
Wire gauge (AWG)	26
Upper temperature	85 °C
Lower temperature	-40 °C

Electrical parameters

Rated voltage	30 V
Rated impulse voltage	500 V
Pollution degree	3
Overvoltage category	II
Material group	II
Rated current (40°C)	2 A
Volume resistivity	≤ 3 mΩ
EMV compliance	not shielded
Degree of protection	IP68
Mechanical operation	> 100 Mating cycles

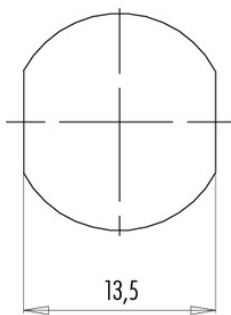
Material

Material of contact	CuSn (Bronze)
Contact plating	Au (gold)
Material of contact body	PA

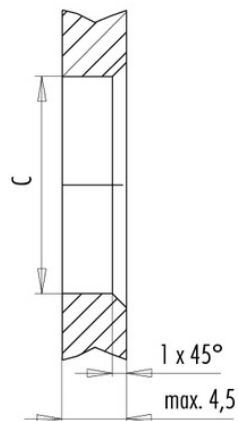
Product **Contacts: 12, Female panel mount connector, screwed from front, with single wires, 0.14 mm², M16 x 1.5**
 Area **M12-A Series 713/763**
 Article number **76 0632 1111 00012-0200**

Installation instructions / Mounting cutout

Mit Fläche als Verdrehschutz
With flats as anti-rotation device



Mit Durchgangsbohrung
With bore hole



	C
PG 9	15,3
M16x1,5	16,1

Anzugsdrehmoment/Tightening moment

Metallgehäuse/Metal housing 6,25 Nm
 Kunststoffgehäuse/Plastic housing 3,75 Nm