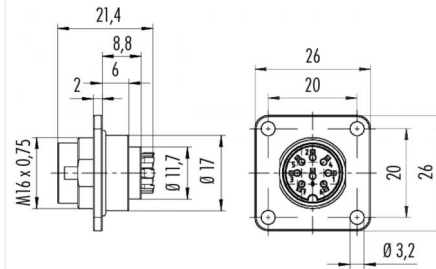


Product **Contacts: 7, Male panel mount connector, rectangular flange, crimp**
 Area **M16 IP67 Series 423/ 723/ 425**
 Article number **09 0127 370 07**

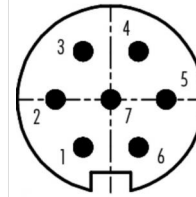
Illustration



Scale drawing



Contact Arrangement



	X	Y
1	-1,75	-3,03
2	-3,50	0,00
3	-1,75	3,03
4	1,75	3,03
5	3,50	0,00
6	1,75	-3,03
7	0,00	0,00

You can find the assembly instruction on the next page.

Technical data

General features

Connector Design male panel mount connector
 Connector locking system bolted
 Termination crimp
 Wire gauge (mm) 0,75 mm²
 Wire gauge (AWG) 20
 Upper temperature 95 °C
 Lower temperature -40 °C

Electrical parameters

Rated voltage 60 V
 Rated impulse voltage 500 V
 Pollution degree 1
 Overvoltage category I
 Material group III
 Rated current (40°C) 5 A
 Volume resistivity ≤ 5 mΩ
 Degree of protection IP67
 Mechanical operation > 500 Mating cycles

Material

Material of contact CuZn (Messing)
 Contact plating Ag (silver)
 Material of contact body PBT (UL 94 V-0)

Product	Contacts: 7, Male panel mount connector, rectangular flange, crimp
Area	M16 IP67 Series 423/ 723/ 425
Article number	09 0127 370 07

Installation instructions / Mounting cutout

