

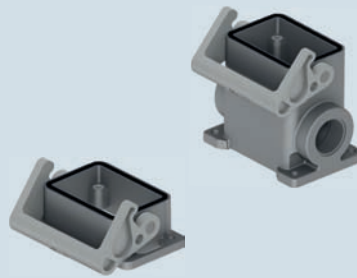


inserts:	page:
CDD ..... 24 poles + ⊕	67
CDS ..... 9 poles + ⊕	78
CSH ..... 6 poles + ⊕	91
CNE, CSE ..... 6 poles + ⊕	104
CCE ..... 6 poles + ⊕	110
CSS ..... 6 poles + ⊕	122
CT, CTSE (16A) *) ..... 6 poles + ⊕	130
CQE ..... 10 poles + ⊕	138
MIXO ..... 2 modules	179 - 215

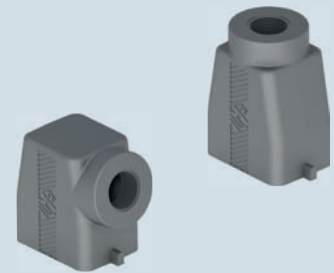
\*) only for standard insulating version TCHI

insert centre distance:  
44 x 27 mm

### housings with single lever

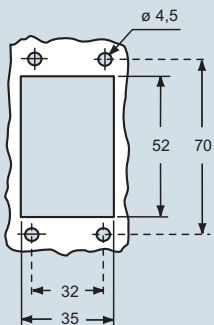


### hoods with 2 pegs



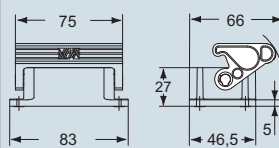
description	part No.	entry M	part No.	entry M
bulkhead mounting housing with thermoplastic lever	<b>TCHI 06 L</b>			
surface mounting housing with thermoplastic lever	<b>TMAP 06 L25</b>	<b>25</b>		
surface mounting housing with thermoplastic lever	<b>TMAP 06 L32</b>	<b>32</b>		
with pegs, side entry			<b>TMAO 06 L25</b>	<b>25</b>
with pegs, side entry			<b>TMAO 06 L32</b>	<b>32</b>
with pegs, top entry			<b>TMAV 06 L25</b>	<b>25</b>
with pegs, top entry			<b>TMAV 06 L32</b>	<b>32</b>

panel cut-out for bulkhead mounting housing in mm

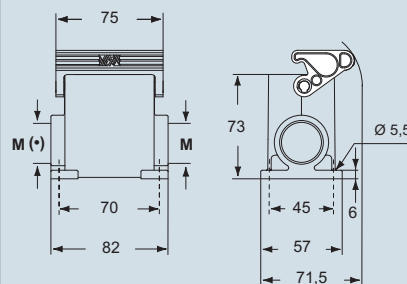


dimensions in mm

#### TCHI 06 L



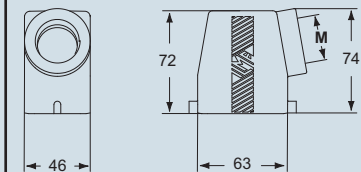
#### TMAP 06 L25 and TMAP 06 L32



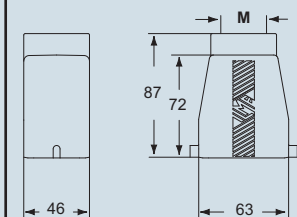
(\*) The surface mounting, high construction housings are supplied with an open threaded entry (\*) and diametrically opposite a closed threaded entry which can be opened by the user if required (with suitable tool).

dimensions in mm

#### TMAO 06 L25 and TMAO 06 L32



#### TMAV 06 L25 and TMAV 06 L32



**CAIUS** Type 12



ambient temperature limits -40 °C / +90 °C

dimensions shown are not binding  
and may be changed without notice



inserts:	page:	
<b>CDD</b> ..... 24 poles + ⊕	67	
<b>CDS</b> ..... 9 poles + ⊕	78	
<b>CSH</b> ..... 6 poles + ⊕	91	
<b>CNE, CSE</b> ..... 6 poles + ⊕	104	
<b>CCE</b> ..... 6 poles + ⊕	110	
<b>CSS</b> ..... 6 poles + ⊕	122	
<b>CT, CTSE (16A) *</b> .... 6 poles + ⊕	130	
<b>CQE</b> ..... 10 poles + ⊕	138	
<b>MIXO</b> ..... 2 modules	179 - 215	

\*) only for standard insulating version TCHI

insert centre distance:  
44 x 27 mm

**hoods with single lever top entry**



**NEW**

**covers**

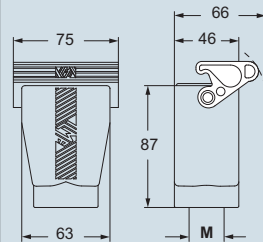


**NEW**

description	part No.	entry M	part No. (with eyelet)	part No. (with loop)
with thermoplastic lever and gasket	<b>TMAV 06 LG25</b>	<b>25</b>		
with thermoplastic lever and gasket	<b>TMAV 06 LG32</b>	<b>32</b>		
with pegs			<b>TCHC 06 L</b>	<b>TCHC 06 SL</b>
with thermoplastic lever and gasket				<b>TCHC 06 LG</b>

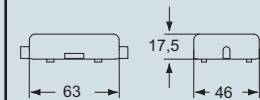
dimensions in mm

**TMAV 06 LG25 and TMAV 06 LG32**

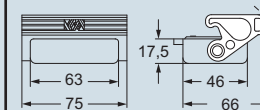


dimensions in mm

**TCHC 06 L (SL)**



**TCHC 06 LG**

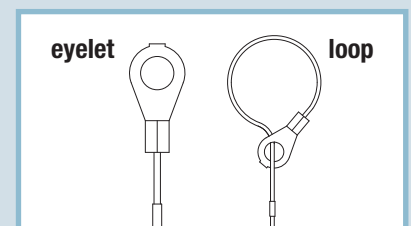


**CAIUS** Type 12



ambient temperature limits -40 °C / +90 °C

dimensions shown are not binding and may be changed without notice



T-TYPE - size 44.27