



inserts:	page:
CD ..... 40 poles + ⊕	57
CT, CTS (10A) *) .... 40 poles + ⊕	64
CDD ..... 72 poles + ⊕	70
CDS ..... 27 poles + ⊕	80
CSH ..... 16 poles + ⊕	93
CNE, CSE ..... 16 poles + ⊕	106
CCE ..... 16 poles + ⊕	112
CSS ..... 16 poles + ⊕	124
CT, CTSE (16A) *) .. 16 poles + ⊕	132
CQE ..... 32 poles + ⊕	140
CQEE ..... 40 poles + ⊕	146
CMCE, CMSH 6+2 (aux) poles + ⊕	150-151
CP ..... 6 poles + ⊕	162
CX ..... 6/36 and 12/2 poles + ⊕	170-171
CX ..... 4/0 and 4/2 poles + ⊕	172
MIXO ..... 4 modules	179-215

\*) can be used only in bulkhead mounting housings

insert centre distance: 77,5 x 27 mm

bulkhead mounting housings with 2 levers or 4 pegs



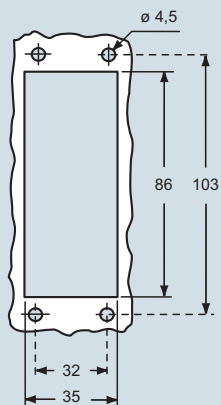
bulkhead mounting housings with single lever



description	part No.	part No.
with one or two levers	<b>CHI 16</b>	<b>CHI 16 L</b>
with pegs <sup>1)</sup>	<b>CHI 16 C</b>	
with pegs and aluminum cover <sup>1)</sup>	<b>CHI 16 CS</b>	
with pegs and plastic cover <sup>1)</sup>	<b>CHI 16 CP</b>	
with lever and cover		<b>CHI 16 LS</b>

<sup>1)</sup> may be combined with enclosures:  
 - CHO/CAO 16 X and CHV/CAV 16 X  
 - MHO/MAO 16 X and MHV/MAV 16 X

panel cut-out for bulkhead mounting housings in mm



**NB:**  
 The enclosures ensure IP66 protection (or IP65 for hinged cover versions) rating when mated and locked with the closing levers.  
 The cover (CS, CP) only ensures mechanical protection, but does not ensure IP65 protection rating.

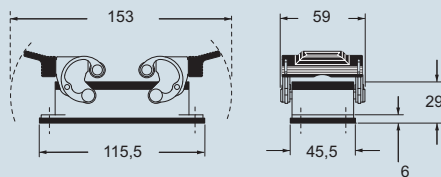
**CALUS**® Type 4/4X/12  
 (except enclosures with plastic cover)



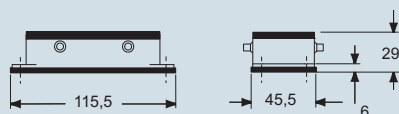
dimensions shown are not binding and may be changed without notice

dimensions in mm

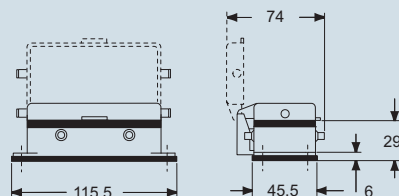
**CHI**



**CHI C**

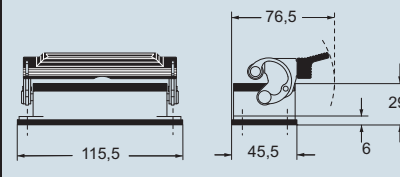


**CHI CS/CP**

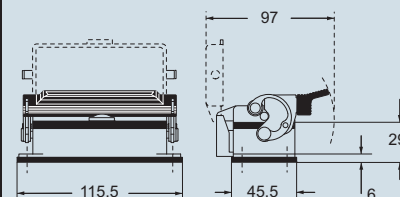


dimensions in mm

**CHI L**



**CHI LS**



C-TYPE - size 77.27



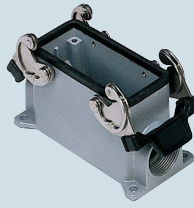


inserts:		page:
CD .....	40 poles + ⊕	57 *
CDD .....	72 poles + ⊕	70 *
CDS .....	27 poles + ⊕	80 *
CSH .....	16 poles + ⊕	93 *
CNE, CSE .....	16 poles + ⊕	106 *
CCE .....	16 poles + ⊕	112 *
CSS .....	16 poles + ⊕	124 *
CQE .....	32 poles + ⊕	140 *
CQEE .....	40 poles + ⊕	146 *
CMCE, CMSH 6+2 (aux)	poles + ⊕	150-151 *
CP .....	6 poles + ⊕	162 *
CX 6/36, 6/12 and 12/2	poles + ⊕	170-171 *
CX .....	4/0 and 4/2 poles + ⊕	172 *
MIXO .....	4 modules	179-215 *
CDSH .....	27 poles + ⊕	11

\* refer to catalogue page CN.16

insert centre distance: 77,5 x 27 mm

surface mounting housings  
with 2 levers



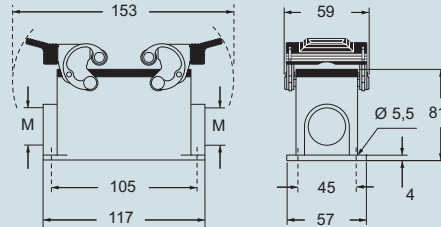
**NEW**

description	part No.	entry M
with levers, high construction *	MAP 16.25	25
with levers, high construction *	MAP 16.225	25 x 2

\* be used only with a complete cable gland (to be purchased separately)

dimensions in mm

MAP



dimensions shown are not binding  
and may be changed without notice



inserts:	page:
CD ..... 40 poles + ⊕	57
CDD ..... 72 poles + ⊕	70
CDS ..... 27 poles + ⊕	80
CSH ..... 16 poles + ⊕	93
CNE, CSE ..... 16 poles + ⊕	106
CCE ..... 16 poles + ⊕	112
CSS ..... 16 poles + ⊕	124
CQE ..... 32 poles + ⊕	140
CQEE ..... 40 poles + ⊕	146
CMCE, CMSH 6+2 (aux)	150-151
CP ..... 6 poles + ⊕	162
CX ..... 6/36 and 12/2 poles + ⊕	170-171
CX ..... 4/0 and 4/2 poles + ⊕	172
MIXO ..... 4 modules	179-215

insert centre distance:  
77,5 x 27 mm

hoods with 4 pegs



hoods with 2 pegs



description	part No.		part No.		part No.		part No.	
		entry Pg		entry M		entry Pg		entry M
with pegs, side entry	<b>CHO 16</b>	21	<b>MHO 16.25</b>	25	<b>CHO 16 L</b>	21	<b>MHO 16 L25</b>	25
with pegs, side entry			<b>MHO 16.32</b>	32			<b>MHO 16 L32</b>	32
with pegs, side entry, high construction	<b>CAO 16.21</b>	21	<b>MAO 16.32</b>	32	<b>CAO 16 L21</b>	21	<b>MAO 16 L32</b>	32
with pegs, side entry, high construction	<b>CAO 16.29</b>	29	<b>MAO 16.40</b>	40	<b>CAO 16 L29</b>	29	<b>MAO 16 L40</b>	40
with pegs, top entry	<b>CHV 16</b>	21	<b>MHV 16.25 **</b>	25	<b>CHV 16 L</b>	21	<b>MHV 16 L25</b>	25
with pegs, top entry			<b>MHV 16.32</b>	32			<b>MHV 16 L32</b>	32
with pegs, top entry, high construction	<b>CAV 16.21</b>	21	<b>MAV 16.32</b>	32	<b>CAV 16 L21</b>	21	<b>MAV 16 L32</b>	32
with pegs, top entry, high construction	<b>CAV 16.29</b>	29	<b>MAV 16.40</b>	40	<b>CAV 16 L29</b>	29	<b>MAV 16 L40</b>	40
with pegs, frontal entry, high construction	<b>CAF 16</b>	21	<b>MAF 16.25</b>	25				
with pegs, frontal entry, high constr., without adaptor *	<b>CFF 16</b>	21	<b>MFF 16.25</b>	25				

\* enclosure without adaptor, threaded on the body, to be used only with a complete cable gland.

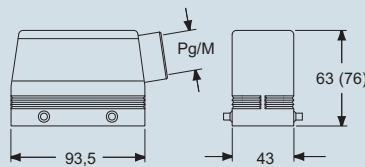
\*\* can only be used with a complete cable gland (to be purchased separately)

dimensions in mm

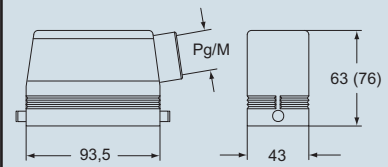
dimensions in mm

alternatively, hoods with pegs are coupled with fixed enclosures:  
- C7, IP67 stainless steel lever, page 276  
- CV, IP66 stainless steel lever, page 282 and 292

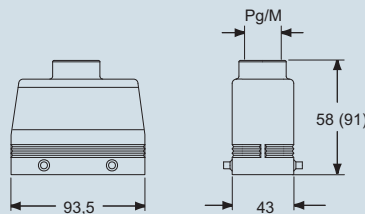
CHO (CAO) and MHO (MAO)



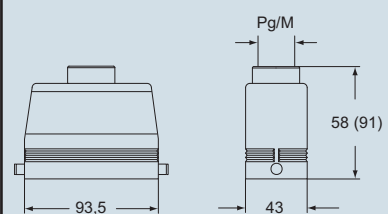
CHO L (CAO L) and MHO L (MAO L)



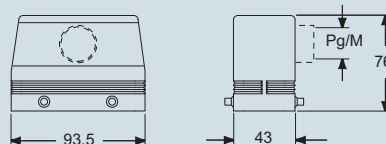
CHV (CAV) and MHV (MAV)



CHO L (CAV L) and MHV L (MAV L)



CAF/CFF and MAF/MFF



**CAIUS** Type 4/4X/12



according to the type of lever

dimensions shown are not binding and may be changed without notice

C-TYPE - size 77.27



inserts:	page:
CD ..... 40 poles + ⊕	57
CDD ..... 72 poles + ⊕	70
CDS ..... 27 poles + ⊕	80
CSH ..... 16 poles + ⊕	93
CNE, CSE ..... 16 poles + ⊕	106
CCE ..... 16 poles + ⊕	112
CSS ..... 16 poles + ⊕	124
CQE ..... 32 poles + ⊕	140
CQEE ..... 40 poles + ⊕	146
CMCE, CMSH 6+2 (aux)	150-151
CP ..... 6 poles + ⊕	162
CX ..... 6/36 and 12/2 poles + ⊕	170-171
CX ..... 4/0 and 4/2 poles + ⊕	172
MIXO ..... 4 modules	179-215

insert centre distance:  
77,5 x 27 mm

hoods with double top entry



hoods with double front entry

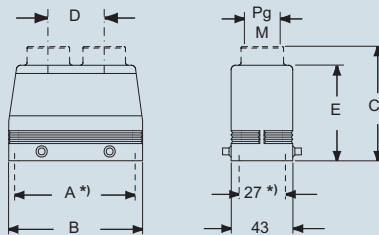


description	part No.		entry Pg		part No.		entry M	
with pegs for two levers - used with enclosures size "77.27" - used with enclosures size "77.27"	CAV 16.216	16 x 2	MAV 16.220	20 x 2				
	CAV 16.221	21 x 2	MAV 16.225	25 x 2				
with pegs for 2 lever, without adaptor * - used with enclosures size "77.27" - used with enclosures size "77.27"	CFV 16.216	16 x 2	MFV 16.220	20 x 2				
	CFV 16.221	21 x 2	MFV 16.225	25 x 2				
with pegs for two levers - used with enclosures size "77.27"					CAF 16.221	21 x 2	MAF 16.225	25 x 2
with pegs for 2 lever, without adaptor * - used with enclosures size "77.27"					CFF 16.221	21 x 2	MFF 16.225	25 x 2

\* enclosure without adaptor, threaded on the body, to be used only with a complete cable gland.

dimensions in mm

CAV/CFV and MAV/MFV

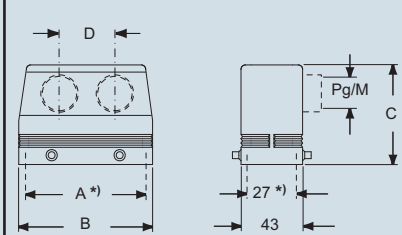


part No.	A *)	B	C	D	E
CAV 16.216/MAV 16.220	77,5	93,5	89 (90,5)	35 (30)	76
CAV 16.221/MAV 16.225	77,5	93,5	90,5	40	76
CFV 16.216/MFV 16.220	77,5	93,5	—	30 (35)	76
CFV 16.221/MFV 16.225	77,5	93,5	—	40	76

\*) screw fixing centre distance

dimensions in mm

CAF/CFF and MAF/MFF



part No.	A *)	B	C	D
CAF/CFF 16.221 / MAF/MFF 16.225	77,5	93,5	76	40

\*) screw fixing centre distance

alternatively, hoods with pegs are coupled with fixed enclosures:  
- C7, IP67 stainless steel lever, page 276  
- CV, IP66 stainless steel lever, page 282 and 292

**CAIUS** Type 4/4X/12



dimensions shown are not binding and may be changed without notice

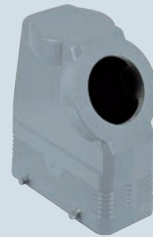
C-TYPE - size 77.27



inserts:		page:
CD .....	40 poles + ⊕	57
CDD .....	72 poles + ⊕	70
CDS .....	27 poles + ⊕	80
CSH .....	16 poles + ⊕	93
CNE, CSE .....	16 poles + ⊕	106
CCE .....	16 poles + ⊕	112
CSS .....	16 poles + ⊕	124
CQE .....	32 poles + ⊕	140
CQEE .....	40 poles + ⊕	146
CMCE, CMSH 6+2 (aux) .....	poles + ⊕	150-151
CP .....	6 poles + ⊕	162
CX .....	6/36 and 12/2 poles + ⊕	170-171
CX .....	4/0 and 4/2 poles + ⊕	172
MIXO .....	4 modules	179-215

insert centre distance:  
77,5 x 27 mm

**inclined hoods for 2 levers with side entry**



**inclined hoods for 2 levers with top entry**

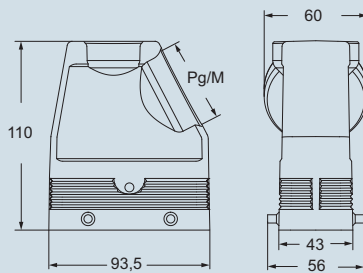


description	part No.		entry		part No.		entry	
			Pg	M			Pg	M
used with enclosures size "77.27" - with pegs for two levers, side entry - with pegs for two levers, side entry	<b>CIO 16.36</b>	36	<b>MIO 16.40</b>	40				
			<b>MIO 16.50</b>	50				
used with enclosures size "77.27" - with pegs for two levers, top entry	<b>CIV 16.29</b>	29	<b>MIV 16.40</b>	40				

alternatively, hoods with pegs are coupled with fixed enclosures:  
- C7, IP67 stainless steel lever, page 276  
- CV, IP66 stainless steel lever, page 282 and 292

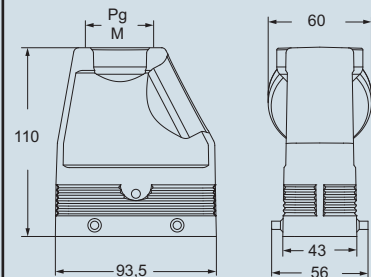
dimensions in mm

**CIO and MIO**



dimensions in mm

**CIV and MIV**



according to the type of lever

dimensions shown are not binding  
and may be changed without notice

C-TYPE - size 77.27



inserts:		page:
CD .....	40 poles + ⊕	57
CDD .....	72 poles + ⊕	70
CDS .....	27 poles + ⊕	80
CSH .....	16 poles + ⊕	93
CNE, CSE .....	16 poles + ⊕	106
CCE .....	16 poles + ⊕	112
CSS .....	16 poles + ⊕	124
CQE .....	32 poles + ⊕	140
CQEE .....	40 poles + ⊕	146
CMCE, CMSH 6+2 (aux)	poles + ⊕	150-151
CP .....	6 poles + ⊕	162
CX .....	6/36 and 12/2 poles + ⊕	170-171
CX .....	4/0 and 4/2 poles + ⊕	172
MIXO .....	4 modules	179-215

insert centre distance:  
77,5 x 27 mm

hoods with 2 levers



hoods with 1 lever

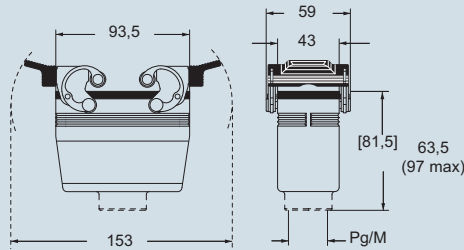


description	part No.		entry Pg		part No.		entry M	
with levers and gasket, top entry	<b>CHV 16 G</b>	21	<b>MHV 16 G32</b>	32	<b>CHV 16 LG</b>	21	<b>MHV 16 LG32</b>	32
with levers and gasket, top entry, high construction	<b>CAV 16 G</b>	21	<b>MAV 16 G25</b>	25	<b>CAV 16 LG21</b>	21	<b>MAV 16 LG25</b>	25
with levers and gasket, top entry, high construction	<b>CAV 16 G29</b>	29	<b>MAV 16 G32</b>	32	<b>CAV 16 LG29</b>	29	<b>MAV 16 LG32</b>	32
with levers and gasket, top entry, high construction			<b>MAV 16 G40</b>	40			<b>MAV 16 LG40</b>	40
with levers and gasket, top entry, high, without adapter *	<b>CFV 16 G</b>	21	<b>MFV 16 G25</b>	25	<b>CFV 16 LG21</b>	21	<b>MFV 16 LG25</b>	25
with levers and gasket, top entry, high, without adapter *	<b>CFV 16 G29</b>	29	<b>MFV 16 G32</b>	32	<b>CFV 16 LG29</b>	29	<b>MFV 16 LG32</b>	32
with levers and gasket, top entry, high, without adapter *			<b>MFV 16 G40</b>	40			<b>MFV 16 LG40</b>	40

\* enclosure without adaptor, threaded on the body, to be used only with a complete cable gland.

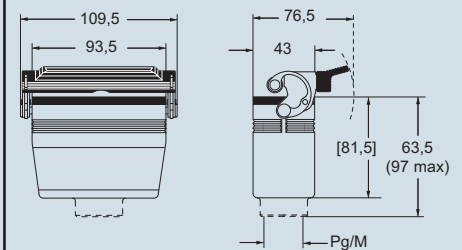
dimensions in mm

**CHV G (CAV G) and [CFV G],  
MHV G (MAV G) and [MFV G]**



dimensions in mm

**CHV LG (CAV LG) and [CFV LG],  
MHV LG (MAV LG) and [MFV LG]**



**CAI<sup>®</sup> US** Type 4/4X/12



dimensions shown are not binding and may be changed without notice

C-TYPE - size 77.27

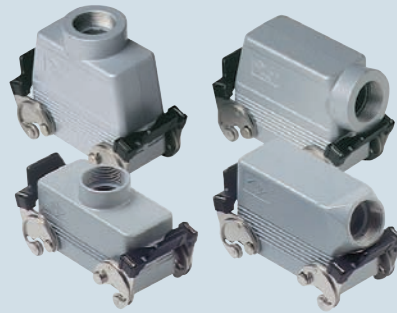




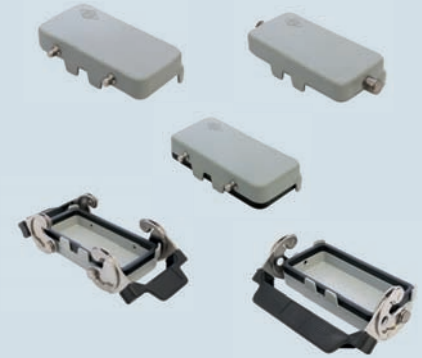
inserts:	page:
CD ..... 40 poles + ⊕	57
CDD ..... 72 poles + ⊕	70
CDS ..... 27 poles + ⊕	80
CSH ..... 16 poles + ⊕	93
CNE, CSE ..... 16 poles + ⊕	106
CCE ..... 16 poles + ⊕	112
CSS ..... 16 poles + ⊕	124
CQE ..... 32 poles + ⊕	140
CQEE ..... 40 poles + ⊕	146
CMCE, CMSH 6+2 (aux)	150-151
CP ..... 6 poles + ⊕	162
CX ..... 6/36 and 12/2 poles + ⊕	170-171
CX ..... 4/0 and 4/2 poles + ⊕	172
MIXO ..... 4 modules	179-215

insert centre distance:  
77,5 x 27 mm

hoods with 2 levers



covers



description	part No.		part No.		part No. (with eyelet)	part No. (with loop)
		entry Pg		entry M		
with levers, side entry <sup>1)</sup>	<b>CHO 16 X</b>	21	<b>MHO 16 X25</b>	25		
with levers, side entry <sup>1)</sup>			<b>MHO 16 X32</b>	32		
with levers, side entry, high construction <sup>1)</sup>	<b>CAO 16 X</b>	21	<b>MAO 16 X32</b>	32		
with levers, side entry, high construction <sup>1)</sup>	<b>CAO 16 X29</b>	29	<b>MAO 16 X40</b>	40		
with levers, top entry <sup>1)</sup>	<b>CHV 16 X</b>	21	<b>MHV 16 X25</b>	25		
with levers, top entry <sup>1)</sup>			<b>MHV 16 X32</b>	32		
with levers, top entry, high construction <sup>1)</sup>	<b>CAV 16 X</b>	21	<b>MAV 16 X32</b>	32		
with levers, top entry, high construction <sup>1)</sup>	<b>CAV 16 X29</b>	29	<b>MAV 16 X40</b>	40		
with 4 pegs (for enclosures with 2 levers with gasket)					<b>CHC 16</b>	<b>CHC 16 S</b>
with 4 pegs and gasket (for enclosures with 2 levers) <sup>2)</sup>					<b>CHC 16 L</b>	<b>CHC 16 C</b>
with 2 pegs (for enclosures with 1 lever with gasket)						<b>CHC 16 SL</b>
with 2 levers (for hoods with 4 pegs)						<b>CHC 16 G</b>
with 1 lever (for hoods with 2 pegs)						<b>CHC 16 LG</b>

<sup>1)</sup> may be combined with enclosures:  
- CHI/CHP/CAP 16 CS/CP/C  
- MHP/MAP 16 CS/CP

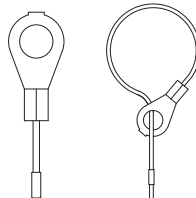
<sup>2)</sup> may be combined with enclosures:  
- CHO/CAO 16 X and CHV/CAV 16 X  
- MHO/MAO 16 X and MHV/MAV 16 X

dust protection cover



CHCP 16 page 496

eyelet loop



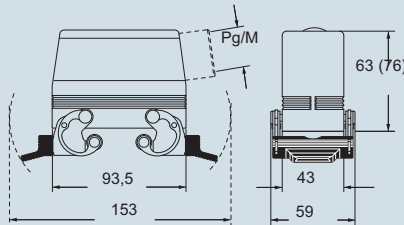
**CALUS** Type 4/4X/12



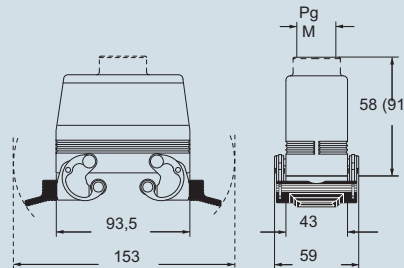
dimensions shown are not binding and may be changed without notice

dimensions in mm

CHO X (CAO X) and MHO X (MAO X)



CHV X (CAV X) and MHV X (MAV X)



dimensions in mm

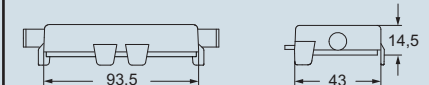
CHC (S)



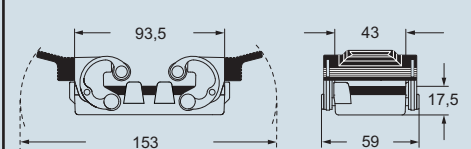
CHC C



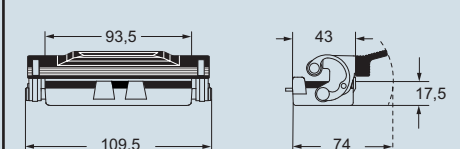
CHC L (SL)



CHC G



CHC LG



C-TYPE - size 77.27