

inserts:	page:
CDD 24 poles + ⊕	67
CDS 9 poles + ⊕	78
CSH 6 poles + ⊕	91
CNE, CSE 6 poles + ⊕	104
CCE 6 poles + ⊕	110
CSS 6 poles + ⊕	122
CT, CTSE (16A) *) 6 poles + ⊕	130
CQE 10 poles + ⊕	138
MIXO 2 modules	179 - 215

*) only for standard insulating version THIH

insert centre distance:
44 x 27 mm

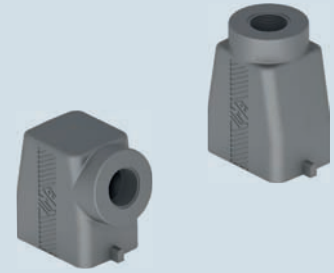
housings with single lever



HNBR gasket

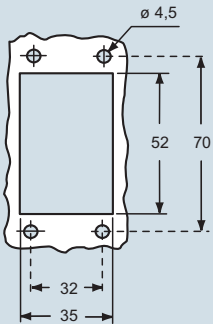
NEW

hoods with 2 pegs



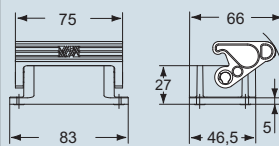
description	part No.	entry M	part No.	entry M
bulkhead mounting housing with thermoplastic lever	THIH 06 L			
surface mounting housing with thermoplastic lever	TAPH 06 L25	25		
surface mounting housing with thermoplastic lever	TAPH 06 L32	32		
with pegs, side entry			TMAO 06 L25	25
with pegs, side entry			TMAO 06 L32	32
with pegs, top entry			TMAV 06 L25	25
with pegs, top entry			TMAV 06 L32	32

panel cut-out for bulkhead mounting housing in mm

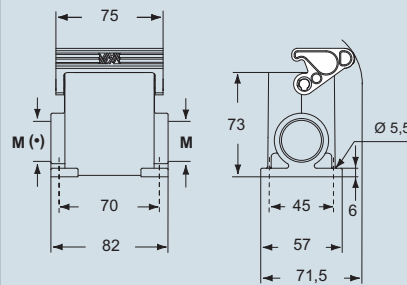


dimensions in mm

THIH 06 L



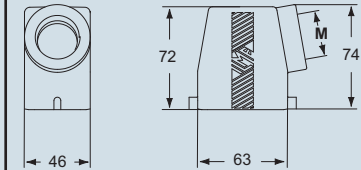
TAPH 06 L25 and TAPH 06 L32



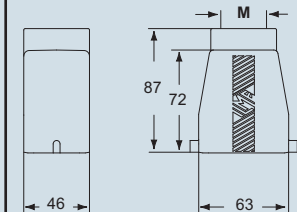
(+) The surface mounting, high construction housings are supplied with an open threaded entry (+) and diametrically opposite a closed threaded entry which can be opened by the user if required (with suitable tool).

dimensions in mm

TMAO 06 L25 and TMAO 06 L32



TMAV 06 L25 and TMAV 06 L32



ambient temperature limits -40 °C / +70 °C

dimensions shown are not binding and may be changed without notice

T-TYPE / H - size 44.27

inserts:	page:	
CDD 24 poles + ⊕	67	
CDS 9 poles + ⊕	78	
CSH 6 poles + ⊕	91	
CNE, CSE 6 poles + ⊕	104	
CCE 6 poles + ⊕	110	
CSS 6 poles + ⊕	122	
CT, CTSE (16A) * 6 poles + ⊕	130	
CQE 10 poles + ⊕	138	
MIXO 2 modules	179 - 215	

*) only for standard insulating version THIH

insert centre distance:
44 x 27 mm

hoods with single lever top entry



HNBR gasket

NEW

covers



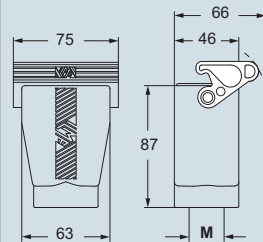
NEW

HNBR gasket

description	part No.	entry M	part No. (with eyelet)	part No. (with loop)
with thermoplastic lever and gasket	TAVH 06 LG25	25		
with thermoplastic lever and gasket	TAVH 06 LG32	32		
with pegs			TCHC 06 L	TCHC 06 SL
with thermoplastic lever and gasket				THCH 06 LG

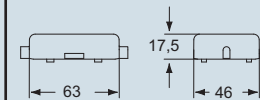
dimensions in mm

TAVH 06 LG25 and TAVH 06 LG32

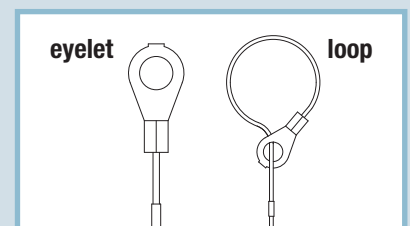
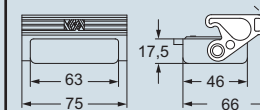


dimensions in mm

TCHC 06 L (SL)



THCH 06 LG



ambient temperature limits -40 °C / +70 °C

dimensions shown are not binding and may be changed without notice