

enclosures: page:

size "21.21"

insulating type 526 - 527
(CK IN, CKG/MKG VN/VAN *)

metallic type
(CKAX I, CKAX/MKAX IAP/AP/VG) 223 and 528
(CKAG/MKAG V/VA *) 529

IP68 416 - 418
(CGK I, CGK/MGK IAP, CGK/MGK V)

*) angled enclosures cannot be used with CX 8 J6IM

refer to catalogue page **CN.16**

- characteristics according to EN 61984:

1A 50V 0,8kV 3

- insulation resistance: $\geq 10 \text{ G}\Omega$

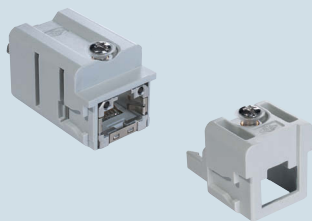
- made of self-extinguishing thermoplastic resin UL 94 V0

- mechanical life: ≥ 500 cycles

- temperature range: from $-40 \text{ }^\circ\text{C}$ to $+70 \text{ }^\circ\text{C}$

- we recommend to fix the cable with cable tie

**adapters for RJ45 male connectors,
RJ45 female - cable IDC connectors**



NEW

**RJ45 male connectors,
IDC termination**



description

part No.

part No.

- socket insert with 1 RJ45 female connector,
- plug insert for 1 RJ45 male IDC connector,
8 data contacts (without RJ45 connector,
to be ordered separately)

**CJK 8IFT
CJK 8IMT**

- RJ45 male IDC connector, 8 data contacts

CX 8 J6IM

CJK 8IFT technical data:

- RJ45 female insert, Cat. 6_A

- shielding housing: zinc diecast

- housing finish: nickel-plated

- current carrying capacity at $50 \text{ }^\circ\text{C}$: 1A

- adequate for Power over Ethernet:

PoE according to IEEE 802.3af

- connectors: IEC 60603-7-5

- adequate for 10 Gigabit Ethernet:

10 Gigabit Ethernet acc. to IEEE 802.3an

- custom-designed cabling systems: PROFINET

Installation Guideline

- generic cabling systems:

ANSI/TIA/EIA-568-C.2

ISO/IEC 11801

EN50173-1

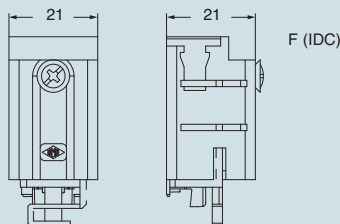
ISO/IEC 24702

EN 61918

- class E_A (channel): ISO/IEC 11801, EN 50173-1

dimensions in mm

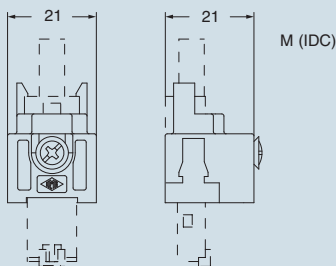
CJK 8IFT



Female-Cable IDC



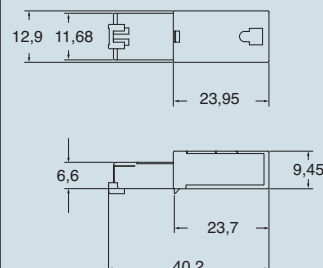
CJK 8IMT ¹⁾



¹⁾ to be used with hoods

dimensions in mm

CX 8 J6IM (can be used with CJK 8IMT)



dimensions shown are not binding
and may be changed without notice

**How to use CR KC coding pins (cannot be used
with IP68 enclosures)**

