



inserts:	page:
CDD 42 poles + ⊕	69
CDS 18 poles + ⊕	79
CSH 10 poles + ⊕	92
CNE, CSE 10 poles + ⊕	105
CCE 10 poles + ⊕	111
CSS 10 poles + ⊕	123
CQE 18 poles + ⊕	139
CMCE 3+2 (aux) poles + ⊕	148
CMSH 3+2 (aux) poles + ⊕	149
CX 8/24 poles + ⊕	169
MIXO 3 modules	179 - 215

insert centre distance:
57 x 27 mm

bulkhead mounting housings

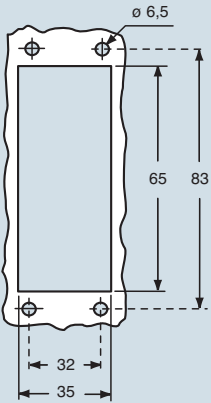


surface mounting housings



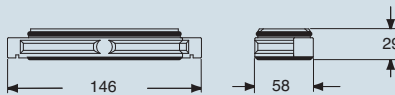
description	part No.	part No.	entry Pg	part No.	entry M
size "57.27"	CGI 10				
size "57.27"		CGP 10.29	29	MGP 10.32	32

panel cut-out for bulkhead mounting housings in mm



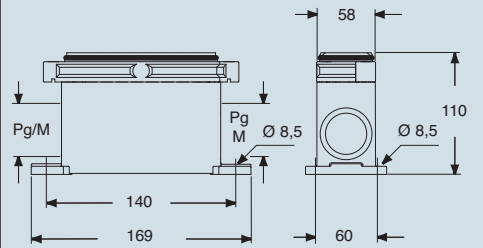
dimensions in mm

CGI



dimensions in mm

CGP and MGP



dust protection cover



CGCP FX from page 497

CALUS Type 4/4X/12



IP69K (compliant with DIN 40050-9)

and may be changed without notice

High protection IP68 version



inserts:	page:
CDD 42 poles + ⊕	69
CDS 18 poles + ⊕	79
CSH 10 poles + ⊕	92
CNE, CSE 10 poles + ⊕	105
CCE 10 poles + ⊕	111
CSS 10 poles + ⊕	123
CQE 18 poles + ⊕	139
CMCE 3+2 (aux) poles + ⊕	148
CMSH 3+2 (aux) poles + ⊕	149
CX 8/24 poles + ⊕	169
MIXO 3 modules	179 - 215

insert centre distance:
57 x 27 mm

hoods



covers

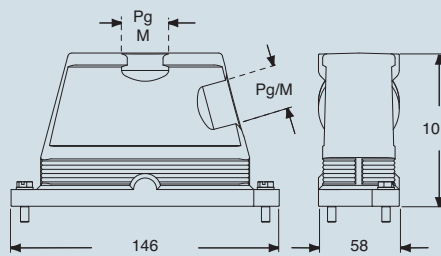


description	part No.	entry Pg	part No.	entry M	part No.
with side entry					
size "57.27"	CGO 10.16	16	MGO 10.25	25	
size "57.27"	CGO 10.21	21	MGO 10.32	32	
size "57.27"	CGO 10.29	29			
with top entry					
size "57.27"	CGV 10.16	16	MGV 10.25	25	
size "57.27"	CGV 10.21	21	MGV 10.32	32	
size "57.27"	CGV 10.29	29	MGV 10.40	40	
size "57.27"					CGC 10



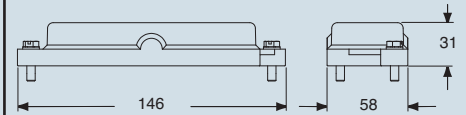
dimensions in mm

CGO/MGO and CGV/MGV



dimensions in mm

CGC



CAVUS® Type 4/4X/12



IP69K (compliant with DIN 40050-9)

dimensions shown are not binding and may be changed without notice

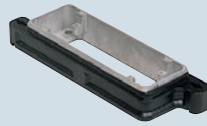
High protection IP68 version



inserts:	page:
CDD 42 poles + ⊕	69
CDS 18 poles + ⊕	79
CSH 10 poles + ⊕	92
CNE, CSE 10 poles + ⊕	105
CCE 10 poles + ⊕	111
CSS 10 poles + ⊕	123
CQE 18 poles + ⊕	139
CMCE 3+2 (aux) poles + ⊕	148
CMSH 3+2 (aux) poles + ⊕	149
CX 8/24 poles + ⊕	169
MIXO 3 modules	179 - 215

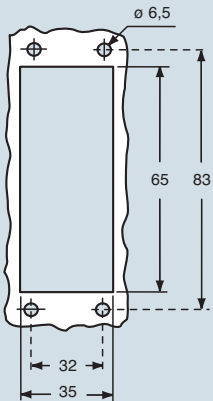
insert centre distance:
57 x 27 mm

bulkhead mounting housings



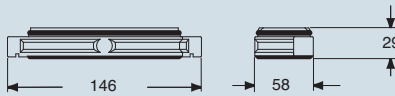
description	part No.
size "57.27"	CGI 10 B

panel cut-out for bulkhead mounting housings in mm



dimensions in mm

CGI B



dust protection cover



CGCP FX from page 497

CAUS® Type 4/4X/12



IP69K (compliant with DIN 40050-9)

dimensions shown are not binding
and may be changed without notice

High protection IP68 version

inserts:	page:
CDD 42 poles + ⊕	69
CDS 18 poles + ⊕	79
CSH 10 poles + ⊕	92
CNE, CSE 10 poles + ⊕	105
CCE 10 poles + ⊕	111
CSS 10 poles + ⊕	123
CQE 18 poles + ⊕	139
CMCE 3+2 (aux) poles + ⊕	148
CMSH 3+2 (aux) poles + ⊕	149
CX 8/24 poles + ⊕	169
MIXO 3 modules	179 - 215

insert centre distance:
57 x 27 mm

hoods



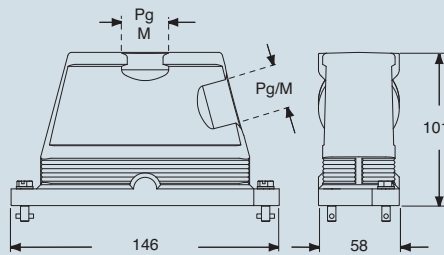
covers



description	part No.	entry Pg	part No.	entry M	part No.
with side entry					
size "57.27"	CGO 10.16 B	16	MGO 10.25 B	25	
size "57.27"	CGO 10.21 B	21	MGO 10.32 B	32	
size "57.27"	CGO 10.29 B	29			
with top entry					
size "57.27"	CGV 10.16 B	16	MGV 10.25 B	25	
size "57.27"	CGV 10.21 B	21	MGV 10.32 B	32	
size "57.27"	CGV 10.29 B	29	MGV 10.40 B	40	
size "57.27"					CGC 10 B

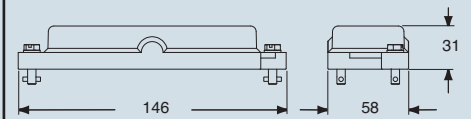
dimensions in mm

CGO/MGO B and CGV/MGV B



dimensions in mm

CGC B



CAUS Type 4/4X/12



IP69K (compliant with DIN 40050-9)

dimensions shown are not binding and may be changed without notice