

Product

Contacts: 5, Female panel mount connector, screwed from front, dip-solder, 12 mm contact length

Area
Article number

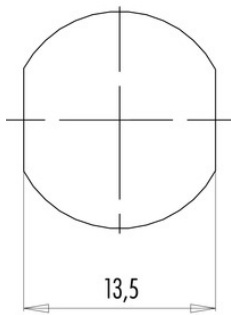
**M12-A Series 713/763
09 3442 92 05**

Pole

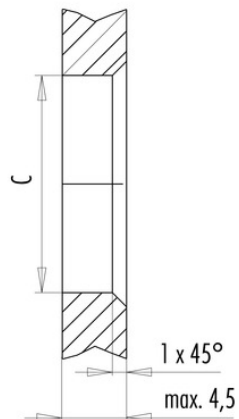
5

Installation instructions / Mounting cutout

Mit Fläche als Verdreherschutz
With flats as anti-rotation device



Mit Durchgangsbohrung
With bore hole



	C
PG 9	15,3
M16x1,5	16,1

Anzugsdrehmoment/Tightening moment

Metallgehäuse/Metal housing 6,25 Nm
Kunststoffgehäuse/Plastic housing 3,75 Nm