



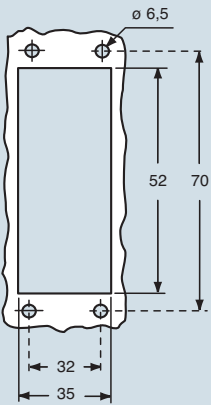
inserts:	page:	bulkhead mounting housings
CDD 24 poles + ⊕	67	
CDS 9 poles + ⊕	78	
CSH 6 poles + ⊕	91	
CNE, CSE 6 poles + ⊕	104	
CCE 6 poles + ⊕	110	
CSS 6 poles + ⊕	122	
CQE 10 poles + ⊕	138	
MIXO 2 modules	179 - 215	

insert centre distance:
44 x 27 mm



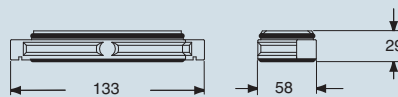
description	part No.	part No.	entry Pg	part No.	entry M
size "44.27"	CGI 06				
size "44.27"		CGP 06.29	29	MGP 06.32	32

panel cut-out for bulkhead mounting housings in mm



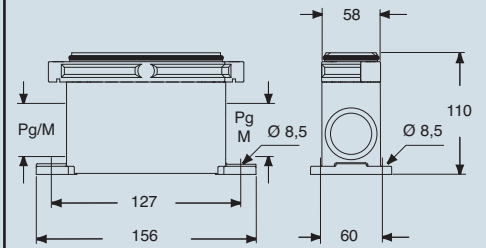
dimensions in mm

CGI



dimensions in mm

CGP and MGP



dust protection cover



CGCP FX from page 497

CAUS® Type 4/4X/12



IP69K (compliant with DIN 40050-9)

and may be changed without notice

High protection IP68 version



inserts:	page:
CDD 24 poles + ⊕	67
CDS 9 poles + ⊕	78
CSH 6 poles + ⊕	91
CNE, CSE 6 poles + ⊕	104
CCE 6 poles + ⊕	110
CSS 6 poles + ⊕	122
CQE 10 poles + ⊕	138
MIXO 2 modules	179 - 215

insert centre distance:
44 x 27 mm

hoods



covers

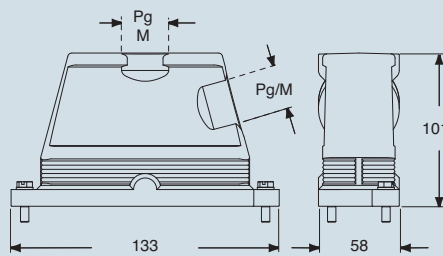


description	part No.	entry Pg	part No.	entry M	part No.
with side entry					
size "44.27"	CGO 06.16	16	MGO 06.25	25	
size "44.27"	CGO 06.21	21	MGO 06.32	32	
size "44.27"	CGO 06.29	29			
with top entry					
size "44.27"	CGV 06.16	16	MGV 06.25	25	
size "44.27"	CGV 06.21	21	MGV 06.32	32	
size "44.27"	CGV 06.29	29	MGV 06.40	40	
size "44.27"					CGC 06



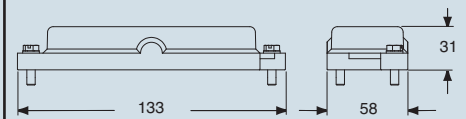
dimensions in mm

CGO/MGO and CGV/MGV



dimensions in mm

CGC



CALUS Type 4/4X/12



IP69K (compliant with DIN 40050-9)

dimensions shown are not binding and may be changed without notice



inserts:		page:
CDD	24 poles + ⊕	67
CDS	9 poles + ⊕	78
CSH	6 poles + ⊕	91
CNE, CSE	6 poles + ⊕	104
CCE	6 poles + ⊕	110
CSS	6 poles + ⊕	122
CQE	10 poles + ⊕	138
MIXO	2 modules	179 - 215

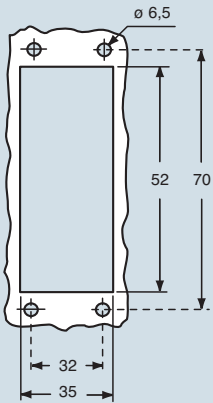
insert centre distance:
44 x 27 mm

bulkhead mounting housings



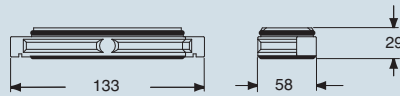
description	part No.
size "44.27"	CGI 06 B

panel cut-out for bulkhead mounting housings in mm



dimensions in mm

CGI B



dust protection cover



CGCP FX from page 497

CAUS® Type 4/4X/12



IP69K (compliant with DIN 40050-9)

dimensions shown are not binding
and may be changed without notice

High protection IP68 version

inserts:	page:
CDD 24 poles + ⊕	67
CDS 9 poles + ⊕	78
CSH 6 poles + ⊕	91
CNE, CSE 6 poles + ⊕	104
CCE 6 poles + ⊕	110
CSS 6 poles + ⊕	122
CQE 10 poles + ⊕	138
MIXO 2 modules	179 - 215

insert centre distance:
44 x 27 mm

hoods



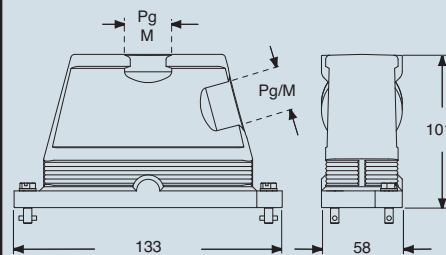
covers



description	part No.	entry Pg	part No.	entry M	part No.
with side entry					
size "44.27"	CGO 06.16 B	16	MGO 06.25 B	25	
size "44.27"	CGO 06.21 B	21	MGO 06.32 B	32	
size "44.27"	CGO 06.29 B	29			
with top entry					
size "44.27"	CGV 06.16 B	16	MGV 06.25 B	25	
size "44.27"	CGV 06.21 B	21	MGV 06.32 B	32	
size "44.27"	CGV 06.29 B	29	MGV 06.40 B	40	
size "44.27"					CGC 06 B

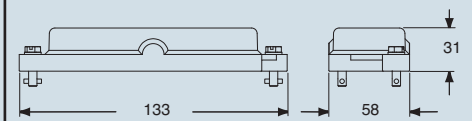
dimensions in mm

CGO/MGO B and CGV/MGV B



dimensions in mm

CGC B



CAUS® Type 4/4X/12



IP69K (compliant with DIN 40050-9)

dimensions shown are not binding and may be changed without notice

High protection IP68 version