

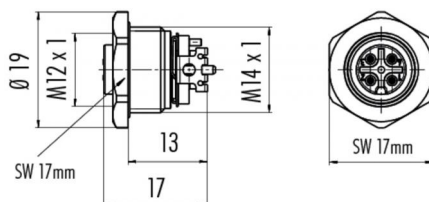
Product **female panel mount connector SMT, with housing, shieldable**

Area **M12-B Series 715/766**  
Article number **99 4442 401 05**

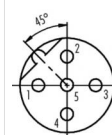
### Illustration



### Scale drawing



### Contact Arrangement



	X	Y
1	-2,50	0,00
2	0,00	2,50
3	2,50	0,00
4	0,00	-2,50
5	0,00	0,00

- 1 braun/brown
- 2 weiß/white
- 3 blau/blue
- 4 schwarz/black
- 5 grau/grey

## Technical data

### General features

Termination SMT  
Upper temperature -40 °C  
Lower temperature 85 °C

### Electrical parameters

Rated impulse voltage 2500 V  
Pollution degree 3  
Overvoltage category II  
Material group III  
EMV compliance shieldable  
Degree of protection IP67  
Mechanical operation > 100 Mating cycles