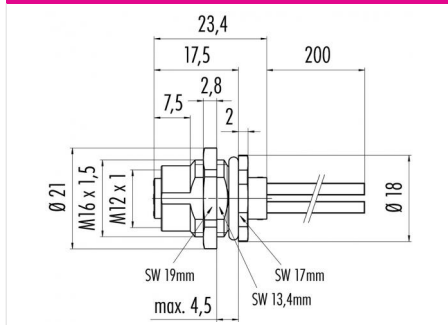


Product	Polzahl: 3+PE, Flanschdose, Power, S-Kodierung, von vorn verschraubbar, mit Litzen	Area	M12-S Series 814
Pole	3+PE	Article number	09 0692 121 04

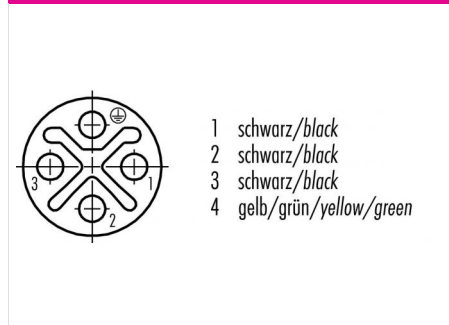
Illustration



Scale drawing



Contact Arrangement



You can find the assembly instruction on the next page.

Technical data

Common values

Connector Design	Female panel mount connector
Connector locking system	screw
Termination	Litzen (AWG 16)
Wire gauge (mm)	max. 1.5 mm ²
Wire gauge (AWG)	16
Cable outlet	-
Upper temperature	85 °C
Lower temperature	-40 °C

Electrical values

Rated voltage	630 V
Rated impulse voltage	6000 V
Pollution degree	3
Overvoltage category	III
Material group	III
Rated current (40°C)	12 A
Volume resistivity	≤ 3 mΩ
Degree of protection	IP67
Mechanical operation	> 100 mating cycles

Material

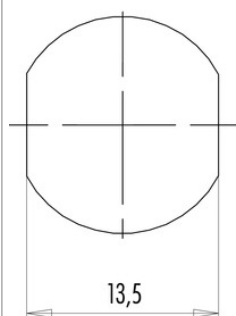
Material of contact	CuZn (Brass)
Contact plating	Au (Gold)
Material of contact body	PA
Material of housing	Nickel-plated zinc die casting, nickel-plated brass

Polzahl: 3+PE, Flanschdose, Power, S-Kodierung, von vorn verschraubbar, mit Litzen Befestigungsgewinde M16 x 1,5

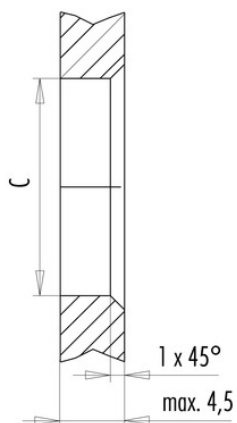
Product	Polzahl: 3+PE, Flanschdose, Power, S-Kodierung, von vorn verschraubbar, mit Litzen	Area	M12-S Series 814
Pole	3+PE	Article number	09 0692 121 04

Installation instructions / Mounting cutout

Mit Fläche als Verdrehschutz
With flats as anti-rotation device



Mit Durchgangsbohrung
With bore hole



	C
PG 9	15,3
M16x1,5	16,1

Anzugsdrehmoment/Tightening moment

Metallgehäuse/Metal housing 6,25 Nm
Kunststoffgehäuse/Plastic housing 3,75 Nm