

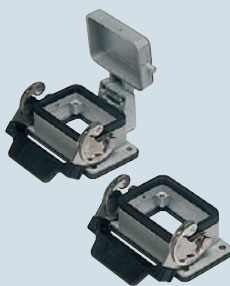


inserts:	page:
<b>CDD</b> ..... 24 poles + ⊕	67
<b>CDS</b> ..... 9 poles + ⊕	78
<b>CSH</b> ..... 6 poles + ⊕	91
<b>CNE, CSE</b> ..... 6 poles + ⊕	104
<b>CCE</b> ..... 6 poles + ⊕	110
<b>CSS</b> ..... 6 poles + ⊕	122
<b>CT, CTSE (16A) *</b> ..... 6 poles + ⊕	130
<b>CQE</b> ..... 10 poles + ⊕	138
<b>MIXO</b> ..... 2 modules	179 - 215

\*) can be used only in bulkhead mounting housings

insert centre distance:  
**44 x 27 mm**

**bulkhead mounting housings with single lever**



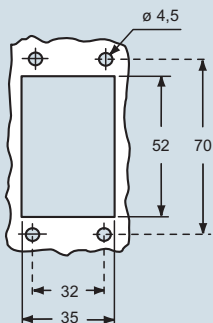
**bulkhead mounting housings with 2 pegs**



description	part No.	part No.
with lever	<b>CHI 06 L</b>	
with lever and cover	<b>CHI 06 LS</b>	
with pegs <sup>1)</sup>		<b>CHI 06 LC</b>
with pegs and aluminum cover <sup>1)</sup>		<b>CHI 06 LCS</b>
with pegs and plastic cover <sup>1)</sup>		<b>CHI 06 LCP</b>

<sup>1)</sup> may be combined with enclosures:  
- CHO/CHV 06 LX  
- CHO/CHV 06 LX

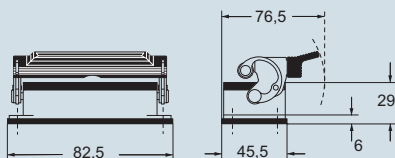
panel cut-out for bulkhead mounting housings in mm



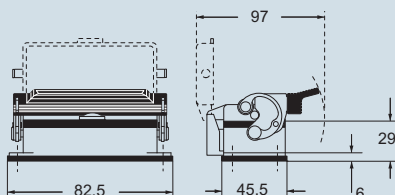
**NB:**  
The enclosures ensure IP66 protection (or IP65 for hinged cover versions) rating when mated and locked with the closing levers.  
The cover (CS, CP) only ensures mechanical protection, but does not ensure IP65 protection rating.

dimensions in mm

**CHI L**

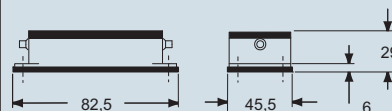


**CHI LS**

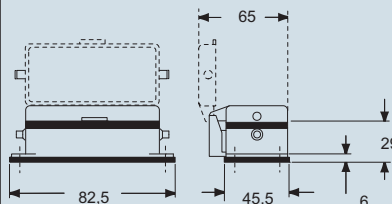


dimensions in mm

**CHI LC**



**CHI LCS/LCP**



**CALUS**® Type 4/4X/12  
(except enclosures with plastic cover)



dimensions shown are not binding and may be changed without notice

C-TYPE - size 44.27



inserts:	page:
CDD ..... 24 poles + ⊕	67
CDS ..... 9 poles + ⊕	78
CSH ..... 6 poles + ⊕	91
CNE, CSE ..... 6 poles + ⊕	104
CCE ..... 6 poles + ⊕	110
CSS ..... 6 poles + ⊕	122
CQE ..... 10 poles + ⊕	138
MIXO ..... 2 modules	179 - 215

insert centre distance:  
44 x 27 mm

surface mounting housings with single lever



angled surface mounting housings with single lever



description	part No.	entry Pg	part No.	entry M	part No.	entry M
with lever	CHP 06 L	16	MHP 06 L20	20		
with lever	CHP 06 L2	16 x 2	MHP 06 L220	20 x 2		
with lever, high construction	CAP 06 L	21	MAP 06 L32	32		
with lever, high construction	CAP 06 L2	21 x 2	MAP 06 L232	32 x 2		
with lever, high construction	CAP 06 L29	29	MAP 06 L40	40		
with lever, high construction	CAP 06 L229	29 x 2	MAP 06 L240	40 x 2		
with lever and cover	CHP 06 LS	16	MHP 06 LS20	20		
with lever and cover	CHP 06 LS2	16 x 2	MHP 06 LS220	20 x 2		
with lever and cover, high construction	CAP 06 LS	21	MAP 06 LS32	32		
with lever and cover, high construction	CAP 06 LS2	21 x 2	MAP 06 LS232	32 x 2		
with lever and cover, high construction	CAP 06 LS29	29	MAP 06 LS40	40		
with lever and cover, high construction	CAP 06 LS229	29 x 2	MAP 06 LS240	40 x 2		

with lever, cable gland entry, closed bulkhead \*

MAV 06LG25-F M25

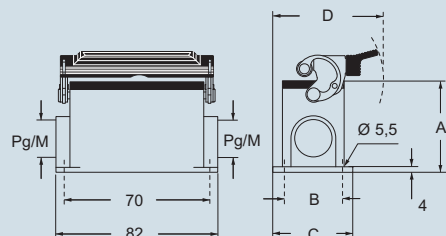
\* - be used only with a complete cable gland (to be purchased separately)

dimensions in mm

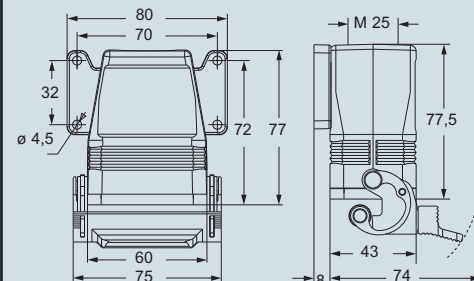
dimensions in mm

- versions with M32 , Pg 21 or Pg 29 entry on request

CHP L - CAP L and MHP L - MAP L

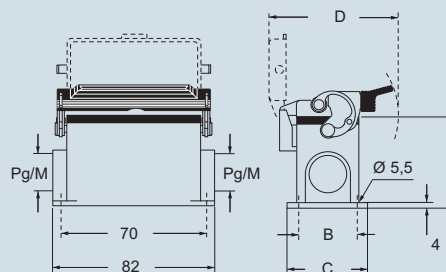


MAV 06LG25-F



**NB:**  
The enclosures ensure IP66 protection (or IP65 for hinged cover versions) rating when mated and locked with the closing levers.  
The cover (CS, CP) only ensures mechanical protection, but does not ensure IP65 protection rating.

CHP LS - CAP LS and MHP LS - MAP LS



type	A	B	C	D
CHP L / MHP L	53	40	52	73,5
CAP L / MAP L	74	45	57	82
CHP LS / MHP LS	53	40	52	97
CAP LS / MAP LS	74	45	57	97

**CALUS**® Type 4/4X/12



dimensions shown are not binding and may be changed without notice

C-TYPE - size 44.27



inserts:	page:	
<b>CDD</b> ..... 24 poles + ⊕	67 *	
<b>CDS</b> ..... 9 poles + ⊕	78 *	
<b>CSH</b> ..... 6 poles + ⊕	91 *	
<b>CNE, CSE</b> ..... 6 poles + ⊕	104 *	
<b>CCE</b> ..... 6 poles + ⊕	110 *	
<b>CSS</b> ..... 6 poles + ⊕	122 *	
<b>CQE</b> ..... 10 poles + ⊕	138 *	
<b>MIXO</b> ..... 2 modules	179 - 215 *	
<b>CDSH</b> ..... 9 poles + ⊕	9	
<b>CDSH NC</b> ..... 6 poles + ⊕	19	

\* refer to catalogue page CN.16

insert centre distance:  
44 x 27 mm

surface mounting housings  
with single lever



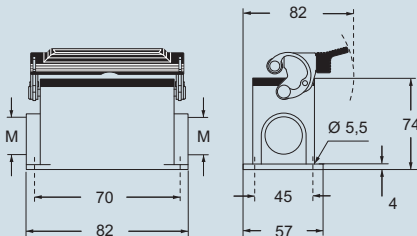
**NEW**

description	part No.	entry M
with lever, high construction *	<b>MAP 06 L25</b>	25
with lever, high construction *	<b>MAP 06 L225</b>	25 x 2

\* be used only with a complete cable gland (to be purchased separately)

dimensions in mm

MAP L



dimensions shown are not binding  
and may be changed without notice



inserts:	page:
<b>CDD</b> ..... 24 poles + ⊕	67
<b>CDS</b> ..... 9 poles + ⊕	78
<b>CSH</b> ..... 6 poles + ⊕	91
<b>CNE, CSE</b> ..... 6 poles + ⊕	104
<b>CCE</b> ..... 6 poles + ⊕	110
<b>CSS</b> ..... 6 poles + ⊕	122
<b>CQE</b> ..... 10 poles + ⊕	138
<b>MIXO</b> ..... 2 modules	179 - 215

insert centre distance:  
44 x 27 mm

hoods with 2 pegs



hoods with 1 lever



description	part No.		part No.		part No.		part No.	
		entry Pg		entry M		entry Pg		entry M
with pegs, side entry	<b>CHO 06 L13</b>	13.5	<b>MHO 06 L20</b>	20				
with pegs, side entry	<b>CHO 06 L16</b>	16	<b>MHO 06 L25</b>	25				
with pegs, side entry, high construction	<b>CAO 06 L21</b>	21	<b>MAO 06 L25</b>	25				
with pegs, side entry, high construction	<b>CAO 06 L29</b>	29	<b>MAO 06 L32</b>	32				
with pegs, side entry, high construction, without adaptor *	<b>CFO 06 L21</b>	21	<b>MFO 06 L25</b>	25				
with pegs, side entry, high construction, without adaptor *	<b>CFO 06 L29</b>	29	<b>MFO 06 L32</b>	32				
with pegs, top entry	<b>CHV 06 L13</b> <sup>1)</sup>	13.5	<b>MHV 06 L20</b> <sup>1)</sup>	20				
with pegs, top entry	<b>CHV 06 L16</b> <sup>1)</sup>	16	<b>MHV 06 L25</b> <sup>1)</sup>	25				
with pegs, top entry, high construction	<b>CAV 06 L21</b>	21	<b>MAV 06 L25</b>	25				
with pegs, top entry, high construction	<b>CAV 06 L29</b>	29	<b>MAV 06 L32</b>	32				
with pegs, top entry, high construction, without adaptor *	<b>CFV 06 L21</b>	21	<b>MFV 06 L25</b>	25				
with pegs, top entry, high construction, without adaptor *	<b>CFV 06 L29</b>	29	<b>MFV 06 L32</b>	32				
with lever, top entry					<b>CHV 06 LG</b>	16	<b>MHV 06 LG25</b>	25
with lever, top entry, high construction					<b>CAV 06 LG21</b>	21	<b>MAV 06 LG25</b>	25
with lever, top entry, high construction					<b>CAV 06 LG29</b>	29	<b>MAV 06 LG32</b>	32
with lever, top entry, high construction, without adaptor *					<b>CFV 06 LG21</b>	21	<b>MFV 06 LG25</b>	25
with lever, top entry, high construction, without adaptor *					<b>CFV 06 LG29</b>	29	<b>MFV 06 LG32</b>	32

\* enclosure without adaptor, threaded on the body, to be used only with a complete cable gland.

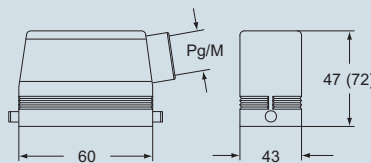
<sup>1)</sup> cannot be used with MIXO series

alternatively, hoods with pegs are coupled with fixed enclosures:

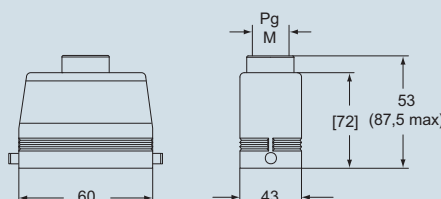
- C7, IP67 stainless steel lever, page 274
- CV, IP66 stainless steel lever, page 280 and 284

dimensions in mm

**CHO L (CAO L) and (CFO L)**  
**MHO L (MAO L) and (MFO L)**

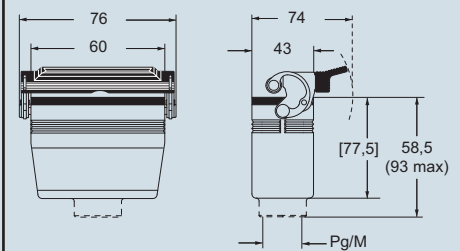


**CHV L (CAV L) and [CFV L]**  
**MHV L (MAV L) and [MFV L]**



dimensions in mm

**CHV LG (CAV LG) and [CFV LG]**  
**MHV LG (MAV LG) and [MFV LG]**



**CAIUS** Type 4/4X/12



according to the type of lever

dimensions shown are not binding and may be changed without notice

C-TYPE - size 44.27



inserts:	page:
<b>CDD</b> ..... 24 poles + ⊕	67
<b>CDS</b> ..... 9 poles + ⊕	78
<b>CSH</b> ..... 6 poles + ⊕	91
<b>CNE, CSE</b> ..... 6 poles + ⊕	104
<b>CCE</b> ..... 6 poles + ⊕	110
<b>CSS</b> ..... 6 poles + ⊕	122
<b>CQE</b> ..... 10 poles + ⊕	138
<b>MIXO</b> ..... 2 modules	179 - 215

insert centre distance:  
44 x 27 mm

hoods with 1 lever



covers

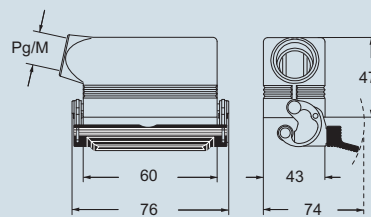


description	part No.		part No.		part No. (with eyelet)	part No. (with loop)
	entry Pg	entry M	entry Pg	entry M		
with lever, without gasket, side entry <sup>1) 3)</sup>	<b>CHO 06 LX16</b>	16	<b>MHO 06 LX20</b>	20		
with lever, without gasket, side entry <sup>1) 3)</sup>			<b>MHO 06 LX25</b>	25		
with lever, without gasket, top entry <sup>1) 3)</sup>	<b>CHV 06 LX16</b>	16	<b>MHV 06 LX20</b>	20		
with lever, without gasket, top entry <sup>1) 3)</sup>			<b>MHV 06 LX25</b>	25		
with lever (for hoods with pegs)						<b>CHC 06 LG</b>
with pegs (for enclosures with lever )					<b>CHC 06 L</b>	<b>CHC 06 SL</b>
with pegs and gasket (for hoods with lever) <sup>2)</sup>						<b>CHC 06 LC</b>

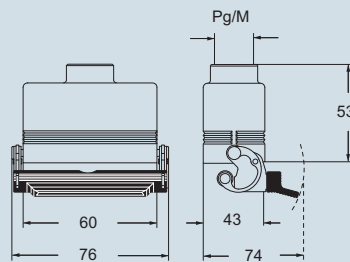
<sup>1)</sup> may be combined with enclosures: CHI 06 LCS/LCP/LC  
<sup>2)</sup> may be combined with enclosures:  
 - CHO/CHV 06 LX  
 - CHO/CHV 06 LX  
<sup>3)</sup> cannot be used with MIXO inserts

dimensions in mm

CHO LX and MHO LX

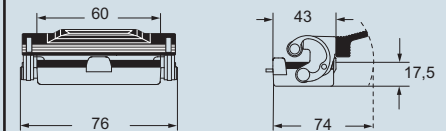


CHV LX and MHV LX

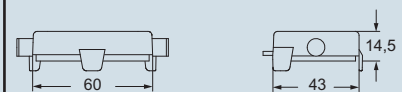


dimensions in mm

CHC LG



CHC L (SL)



CHC LC



**dust protection cover**

**CHCP 06 page 496**

**CALUS** Type 4/4X/12



dimensions shown are not binding and may be changed without notice

C-TYPE - size 44.27