

Product **Contacts: 5, Female panel mount connector, dip-soldered, PG 9**
 Area **M12-A Series 713/763**
 Article number **86 0232 0000 00008**

Illustration	Scale drawing	Contact Arrangement																											
		<table border="1" style="margin: 10px auto;"> <thead> <tr> <th></th> <th>X</th> <th>Y</th> </tr> </thead> <tbody> <tr><td>1</td><td>-2,69</td><td>0,57</td></tr> <tr><td>2</td><td>-0,57</td><td>2,69</td></tr> <tr><td>3</td><td>1,66</td><td>2,20</td></tr> <tr><td>4</td><td>2,75</td><td>0,19</td></tr> <tr><td>5</td><td>1,94</td><td>-1,94</td></tr> <tr><td>6</td><td>-0,19</td><td>-2,75</td></tr> <tr><td>7</td><td>-2,20</td><td>-1,66</td></tr> <tr><td>8</td><td>0,00</td><td>0,00</td></tr> </tbody> </table> <p style="font-size: small;"> 1 weiß/white 2 braun/brown 3 grün/green 4 gelb/yellow 5 grau/grey 6 rosa/pink 7 blau/blue 8 rot/red </p> <p style="font-size: x-small;"> Geschirmte Versionen: Schirm auf Gehäuse oder Pin 8 Shielded versions: shield on housing or pin 8 </p>		X	Y	1	-2,69	0,57	2	-0,57	2,69	3	1,66	2,20	4	2,75	0,19	5	1,94	-1,94	6	-0,19	-2,75	7	-2,20	-1,66	8	0,00	0,00
	X	Y																											
1	-2,69	0,57																											
2	-0,57	2,69																											
3	1,66	2,20																											
4	2,75	0,19																											
5	1,94	-1,94																											
6	-0,19	-2,75																											
7	-2,20	-1,66																											
8	0,00	0,00																											

You can find the assembly instruction on the next page.

Technical data

General features

Connector Design	female panel mount connector
Connector locking system	bolted
Termination	dip-solder
Wire gauge (mm)	0,25 mm ²
Wire gauge (AWG)	24
Upper temperature	85 °C
Lower temperature	-40 °C

Cable data

Approval 1	UL
------------	----

Electrical parameters

Rated voltage	30 V
Rated impulse voltage	800 V
Pollution degree	3
Overvoltage category	II
Material group	II
Rated current (40°C)	1,5 A (UL 2A)
Volume resistivity	≤ 3 mΩ
EMV compliance	not shielded
Degree of protection	IP68
Mechanical operation	> 100 Mating cycles

Material

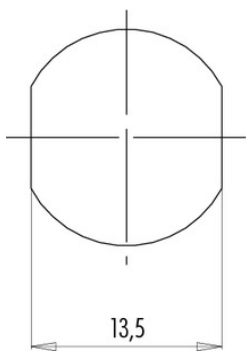
Material of contact	CuSn (Bronze)
Contact plating	Au (gold)
Material of contact body	PA

Product **Contacts: 5, Female panel mount connector, dip-soldered, PG 9**
 Area **M12-A Series 713/763**
 Article number **86 0232 0000 00008**

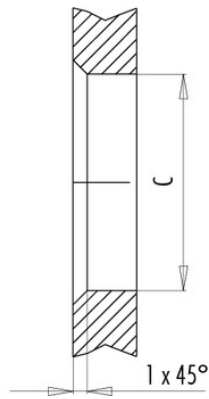
Installation instructions / Mounting cutout

Mit Fläche als Verdrehschutz
With flats as anti-rotation device

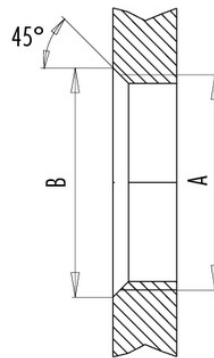
PG 9/M16 x 1,5



Mit Durchgangsbohrung
With bore hole



Mit Gewinde, einschraubbar
With thread to screw in



alternativ/alternativ

	A	B	C
PG 9	PG 9	16,2	15,3
PG 13,5	PG 13,5	21,5	20,5
M16x1,5	M16x1,5	17,0	16,1
M20x1,5	M20x1,5	21,0	20,1

Anzugsdrehmoment/Tightening moment

Metallgehäuse/Metal housing 6,25 Nm
 Kunststoffgehäuse/Plastic housing 3,75 Nm