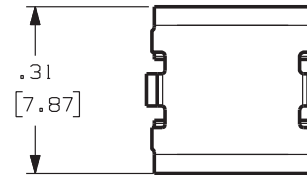
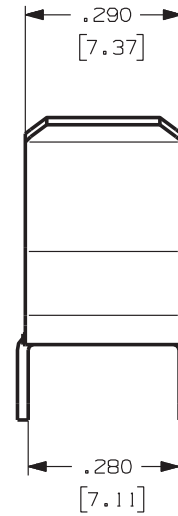
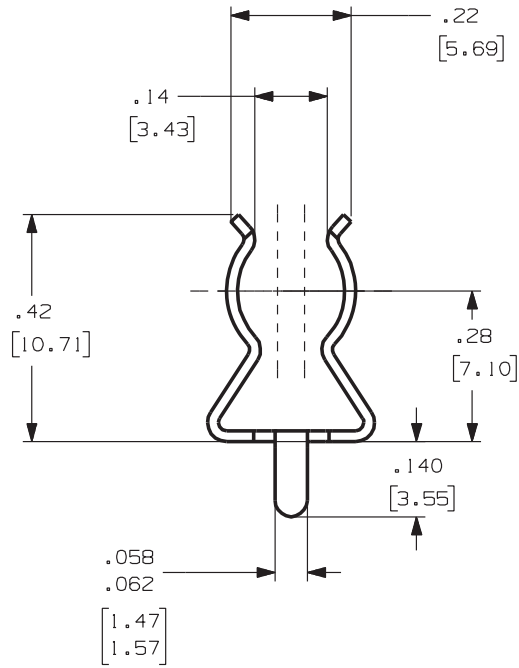


927

Rev.
A

APPLICATION DRAWING



RoHS COMPLIANT

MATERIAL	FINISH
.020 CDA 260 BRASS	1100% MATTE TIN

Radio Circle Drive
Mount Kisco, New York 10549

ZIERICK

FUSE CLIP

Zierick Product Related Recommendations are general guidelines only. Since each customer's design, process and application is different it is necessary that customers thoroughly test our products in specific applications.

THIS DOCUMENT AND THE CONFIDENTIAL INFORMATION CONTAINED HERE ARE THE PROPERTY OF ZIERICK MANUFACTURING CORPORATION AND MAY NOT BE USED IN WHOLE OR IN PART IN ANY WAY, OR COMMUNICATED TO ANY PARTY OTHER THAN THE RECIPIENT WITHOUT THE EXPRESS PRIOR WRITTEN CONSENT OF ZIERICK MANUFACTURING CORPORATION.

927

A