



inserts:	page:
CDD ..... 42 poles + ⊕	69
CDS ..... 18 poles + ⊕	79
CSH ..... 10 poles + ⊕	92
CNE, CSE ..... 10 poles + ⊕	105
CCE ..... 10 poles + ⊕	111
CSS ..... 10 poles + ⊕	123
CT, CTSE (16A) *) .. 10 poles + ⊕	131
CQE ..... 18 poles + ⊕	139
CMCE ..... 3+2 (aux) poles + ⊕	148
CMSH ..... 3+2 (aux) poles + ⊕	149
CX ..... 8/24 poles + ⊕	169
MIXO ..... 3 modules	179 - 215

\*) can be used only in bulkhead mounting housings

insert centre distance:  
57 x 27 mm

bulkhead mounting housings with 2 levers or 4 pegs



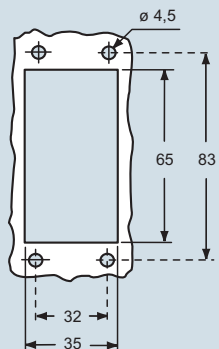
bulkhead mounting housings with single lever



description	part No.	part No.
with one or two levers	CHI 10	CHI 10 L
with pegs <sup>1)</sup>	CHI 10 C	
with pegs and aluminum cover <sup>1)</sup>	CHI 10 CS	
with pegs and plastic cover <sup>1)</sup>	CHI 10 CP	
with lever and cover.		CHI 10 LS

<sup>1)</sup> may be combined with enclosures:  
- CHO/CAO 10 X and CHV/CAV 10 X  
- MHO/MAO 10 X and MHV/MAV 10 X

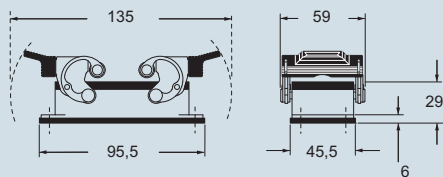
panel cut-out for bulkhead mounting housings in mm



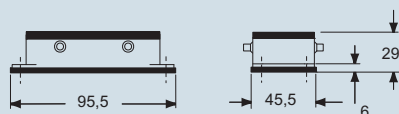
**NB:**  
The enclosures ensure IP66 protection (or IP65 for hinged cover versions) rating when mated and locked with the closing levers.  
The cover (CS, CP) only ensures mechanical protection, but does not ensure IP65 protection rating.

dimensions in mm

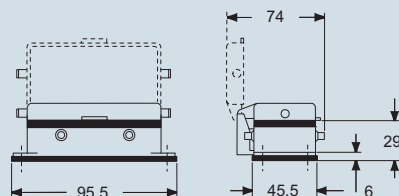
CHI



CHI C

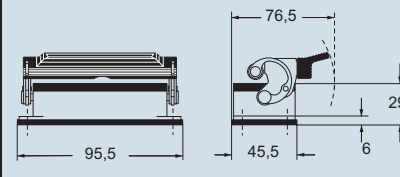


CHI CS/CP

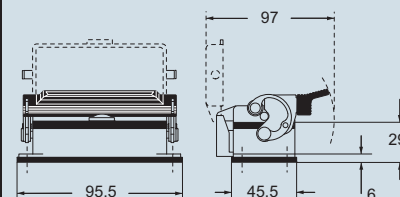


dimensions in mm

CHI L



CHI LS



**CALUS**® Type 4/4X/12  
(except enclosures with plastic cover)



dimensions shown are not binding and may be changed without notice

ANGLED VERSION



page 469

C-TYPE - size 57.27



inserts:	page:
CDD ..... 42 poles + ⊕	69
CDS ..... 18 poles + ⊕	79
CSH ..... 10 poles + ⊕	92
CNE, CSE ..... 10 poles + ⊕	105
CCE ..... 10 poles + ⊕	111
CSS ..... 10 poles + ⊕	123
CQE ..... 18 poles + ⊕	139
CMCE ..... 3+2 (aux) poles + ⊕	148
CMSH ..... 3+2 (aux) poles + ⊕	149
CX ..... 8/24 poles + ⊕	169
MIXO ..... 3 modules	179 - 215

insert centre distance:  
57 x 27 mm

surface mounting housings with 2 levers or 4 pegs



surface mounting housings with single lever



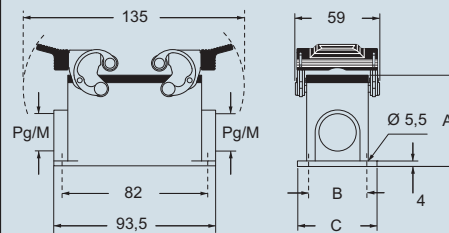
description	part No.	entry Pg	part No.	entry M	part No.	entry Pg	part No.	entry M
with levers	CHP 10	16	MHP 10.20	20	CHP 10 L	16	MHP 10 L20	20
with levers	CHP 10.2	16 x 2	MHP 10.220	20 x 2	CHP 10 L2	16 x 2	MHP 10 L220	20 x 2
with levers, high construction	CAP 10.21	21	MAP 10.32	32	CAP 10 L	21	MAP 10 L32	32
with levers, high construction	CAP 10.221	21 x 2	MAP 10.232	32 x 2	CAP 10 L2	21 x 2	MAP 10 L232	32 x 2
with levers, high construction	CAP 10.29	29	MAP 10.40	40	CAP 10 L29	29	MAP 10 L40	40
with levers, high construction	CAP 10.229	29 x 2	MAP 10.240	40 x 2	CAP 10 L229	29 x 2	MAP 10 L240	40 x 2
with pegs and aluminum cover <sup>1)</sup>	CHP 10 CS	16	MHP 10 CS20	20				
with pegs and aluminum cover <sup>1)</sup>	CHP 10 CS2	16 x 2	MHP 10 CS220	20 x 2				
with pegs and aluminum cover, high construction <sup>1)</sup>	CAP 10 CS	21	MAP 10 CS32	32				
with pegs and aluminum cover, high construction <sup>1)</sup>	CAP 10 CS2	21 x 2	MAP 10 CS232	32 x 2				
with pegs and aluminum cover, high construction <sup>1)</sup>	CAP 10 CS29	29	MAP 10 CS40	40				
with pegs and aluminum cover, high construction <sup>1)</sup>	CAP 10 CS229	29 x 2	MAP 10 CS240	40 x 2				
with pegs and plastic cover <sup>1)</sup>	CHP 10 CP	16	MHP 10 CP20	20				
with pegs and plastic cover <sup>1)</sup>	CHP 10 CP2	16 x 2	MHP 10 CP220	20 x 2				
with pegs and plastic cover, high construction <sup>1)</sup>	CAP 10 CP	21	MAP 10 CP32	32				
with pegs and plastic cover, high construction <sup>1)</sup>	CAP 10 CP2	21 x 2	MAP 10 CP232	32 x 2				
with pegs and plastic cover, high construction <sup>1)</sup>	CAP 10 CP29	29	MAP 10 CP40	40				
with pegs and plastic cover, high construction <sup>1)</sup>	CAP 10 CP229	29 x 2	MAP 10 CP240	40 x 2				
with lever and cover					CHP 10 LS	16	MHP 10 LS20	20
with lever and cover					CHP 10 LS2	16 x 2	MHP 10 LS220	20 x 2
with lever and cover, high construction					CAP 10 LS	21	MAP 10 LS32	32
with lever and cover, high construction					CAP 10 LS2	21 x 2	MAP 10 LS232	32 x 2
with lever and cover, high construction					CAP 10 LS29	29	MAP 10 LS40	40
with lever and cover, high construction					CAP 10 LS229	29 x 2	MAP 10 LS240	40 x 2

<sup>1)</sup> may be combined with enclosures:  
- CHO/CAO 10 X and CHV/CAV 10 X  
- MHO/MAO 10 X and MHV/MAV 10 X

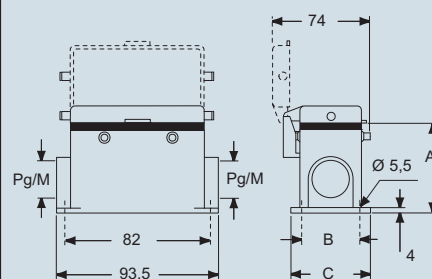
**NB:**  
The enclosures ensure IP66 protection (or IP65 for hinged cover versions) rating when mated and locked with the closing levers.  
The cover (CS, CP) only ensures mechanical protection, but does not ensure IP65 protection rating.

dimensions in mm

CHP - CAP and MHP - MAP



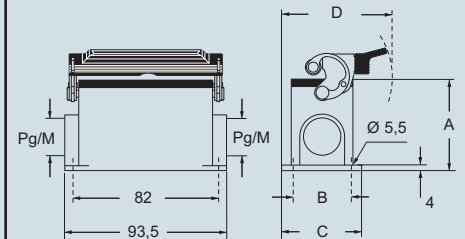
CHP CS/CP - CAP CS/CP and MHP CS/CP - MAP CS/CP



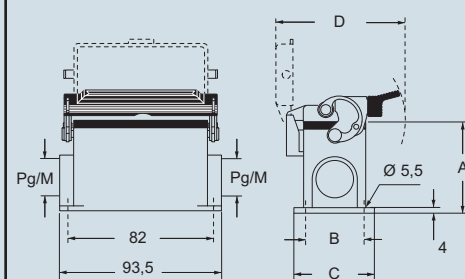
type	A	B	C
CHP / MHP	57	40	52
CAP / MAP	74	45	57
CHP CS / MHP CS	57	40	52
CAP CS / MAP CS	74	45	57
CHP CP / MHP CP	57	40	52
CAP CP / MAP CP	74	45	57

dimensions in mm

CHP L - CAP L and MHP L - MAP L



CHP LS - CAP LS and MHP LS - MAP LS



type	A	B	C	D
CHP L / MHP L	57	40	52	79,5
CAP L / MAP L	74	45	57	82
CHP LS / MHP LS	57	40	52	97
CAP LS / MAP LS	74	45	57	97

**CALUS**® Type 4/4X/12  
(except enclosures with plastic cover)



dimensions shown are not binding and may be changed without notice

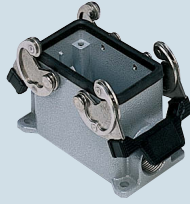


inserts:	page:
<b>CDD</b> ..... 42 poles + ⊕	69 *
<b>CDS</b> ..... 18 poles + ⊕	79 *
<b>CSH</b> ..... 10 poles + ⊕	92 *
<b>CNE, CSE</b> ..... 10 poles + ⊕	105 *
<b>CCE</b> ..... 10 poles + ⊕	111 *
<b>CSS</b> ..... 10 poles + ⊕	123 *
<b>CQE</b> ..... 18 poles + ⊕	139 *
<b>CMCE</b> ..... 3+2 (aux) poles + ⊕	148 *
<b>CMSH</b> ..... 3+2 (aux) poles + ⊕	149 *
<b>CX</b> ..... 8/24 poles + ⊕	169 *
<b>MIXO</b> ..... 3 modules	179 - 215 *
<b>CDSH</b> ..... 18 poles + ⊕	10

\* refer to catalogue page CN.16

insert centre distance:  
57 x 27 mm

surface mounting housings  
with 2 levers



**NEW**

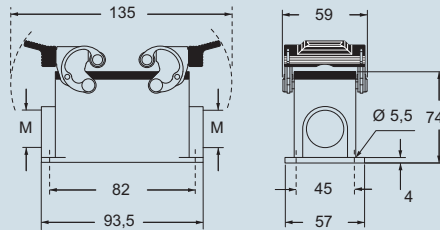


description	part No.	entry
with levers, high construction *	<b>MAP 10.25</b>	25
with levers, high construction *	<b>MAP 10.225</b>	25 x 2

\* be used only with a complete cable gland (to be purchased separately)

dimensions in mm

MAP



dimensions shown are not binding  
and may be changed without notice



inserts:	page:
CDD ..... 42 poles + ⊕	69
CDS ..... 18 poles + ⊕	79
CSH ..... 10 poles + ⊕	92
CNE, CSE ..... 10 poles + ⊕	105
CCE ..... 10 poles + ⊕	111
CSS ..... 10 poles + ⊕	123
CQE ..... 18 poles + ⊕	139
CMCE ..... 3+2 (aux) poles + ⊕	148
CMSH ..... 3+2 (aux) poles + ⊕	149
CX ..... 8/24 poles + ⊕	169
MIXO ..... 3 modules	179 - 215

insert centre distance:  
57 x 27 mm

hoods with 4 pegs



hoods with 2 pegs



description	part No.		part No.		part No.		part No.	
		entry Pg		entry M		entry Pg		entry M
with pegs, side entry	<b>CHO 10</b>	16	<b>MHO 10.20</b>	20	<b>CHO 10 L</b>	16	<b>MHO 10 L20</b>	20
with pegs, side entry			<b>MHO 10.25</b>	25			<b>MHO 10 L25</b>	25
with pegs, side entry, high construction	<b>CAO 10.21</b>	21	<b>MAO 10.32</b>	32	<b>CAO 10 L21</b>	21	<b>MAO 10 L32</b>	32
with pegs, side entry, high construction	<b>CAO 10.29</b>	29	<b>MAO 10.40</b>	40	<b>CAO 10 L29</b>	29	<b>MAO 10 L40</b>	40
with pegs, top entry	<b>CHV 10</b>	16	<b>MHV 10.20 **</b>	20	<b>CHV 10 L</b>	16	<b>MHV 10 L20 **</b>	20
with pegs, top entry			<b>MHV 10.25</b>	25			<b>MHV 10 L25</b>	25
with pegs, top entry, high construction	<b>CAV 10.21</b>	21	<b>MAV 10.32</b>	32	<b>CAV 10 L21</b>	21	<b>MAV 10 L32</b>	32
with pegs, top entry, high construction	<b>CAV 10.29</b>	29	<b>MAV 10.40</b>	40	<b>CAV 10 L29</b>	29	<b>MAV 10 L40</b>	40
with pegs, frontal entry, high construction	<b>CAF 10</b>	16	<b>MAF 10.20</b>	20				
with pegs, frontal entry, high constr., without adaptor *	<b>CFF 10</b>	16	<b>MFF 10.20</b>	20				

\* enclosure without adaptor, threaded on the body, to be used only with a complete cable gland.

\*\* can only be used with a complete cable gland (to be purchased separately)

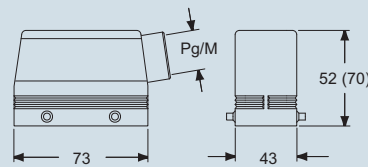
dimensions in mm

dimensions in mm

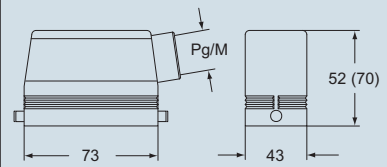
alternatively, hoods with pegs are coupled with fixed enclosures:

- C7, IP67 stainless steel lever, page 275
- CV, IP66 stainless steel lever, page 281 and 288

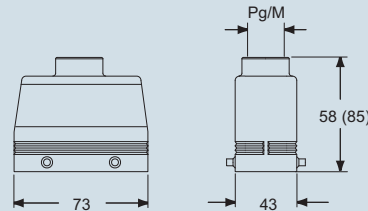
CHO (CAO) and MHO (MAO)



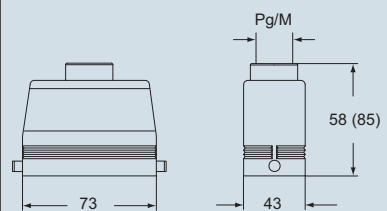
CHO L (CAO L) and MHO L (MAO L)



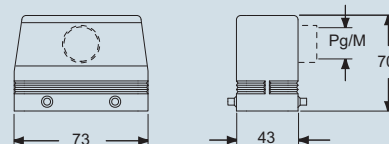
CHV (CAV) and MHV (MAV)



CHO L (CAV L) and MHV L (MAV L)



CAF/CFF and MAF/MFF



**CALUS** Type 4/4X/12



according to the type of lever

dimensions shown are not binding and may be changed without notice

C-TYPE - size 57.27



inserts:	page:
<b>CDD</b> ..... 42 poles + ⊕	69
<b>CDS</b> ..... 18 poles + ⊕	79
<b>CSH</b> ..... 10 poles + ⊕	92
<b>CNE, CSE</b> ..... 10 poles + ⊕	105
<b>CCE</b> ..... 10 poles + ⊕	111
<b>CSS</b> ..... 10 poles + ⊕	123
<b>CQE</b> ..... 18 poles + ⊕	139
<b>CMCE</b> ..... 3+2 (aux) poles + ⊕	148
<b>CMSH</b> ..... 3+2 (aux) poles + ⊕	149
<b>CX</b> ..... 8/24 poles + ⊕	169
<b>MIXO</b> ..... 3 modules	179 - 215

insert centre distance:  
57 x 27 mm

hoods with double top entry

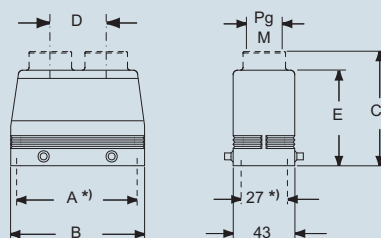


description	part No.	entry	
		Pg	M
with pegs for two levers - used with enclosures size "57.27"	<b>CAV 10.213</b>	13,5 x 2	<b>MAV 10.220</b> 20 x 2
with pegs for 2 lever, without adaptor * - used with enclosures size "57.27"	<b>CFV 10.213</b>	13,5 x 2	<b>MFV 10.220</b> 20 x 2

\* enclosure without adaptor, threaded on the body, to be used only with a complete cable gland.

dimensions in mm

CAV/CFV and MAV/MFV



alternatively, hoods with pegs are coupled with fixed enclosures:

- C7, IP67 stainless steel lever, page 275
- CV, IP66 stainless steel lever, page 281 and 288

part No.	A *)	B	C	D	E
<b>CAV 10.213</b>	57	73	82 (84,5)	26 (28,5)	70
<b>MAV 10.220</b>	57	73	—	28,5 (26)	70

\*) screw fixing centre distance

**CAVUS** Type 4/4X/12



dimensions shown are not binding and may be changed without notice

C-TYPE - size 57.27



inserts:	page:
CDD ..... 42 poles + ⊕	69
CDS ..... 18 poles + ⊕	79
CSH ..... 10 poles + ⊕	92
CNE, CSE ..... 10 poles + ⊕	105
CCE ..... 10 poles + ⊕	111
CSS ..... 10 poles + ⊕	123
CQE ..... 18 poles + ⊕	139
CMCE ..... 3+2 (aux) poles + ⊕	148
CMSH ..... 3+2 (aux) poles + ⊕	149
CX ..... 8/24 poles + ⊕	169
MIXO ..... 3 modules	179 - 215

insert centre distance:  
57 x 27 mm

hoods with 2 levers



hoods with 1 lever

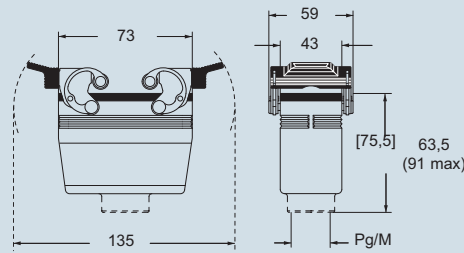


description	part No.		part No.		part No.		part No.	
		entry Pg		entry M		entry Pg		entry M
with levers and gasket, top entry	<b>CHV 10 G</b>	16	<b>MHV 10 G25</b>	25	<b>CHV 10 LG</b>	16	<b>MHV 10 LG25</b>	25
with levers and gasket, top entry, high construction	<b>CAV 10 G</b>	21	<b>MAV 10 G25</b>	25	<b>CAV 10 LG21</b>	21	<b>MAV 10 LG25</b>	25
with levers and gasket, top entry, high construction	<b>CAV 10 G29</b>	29	<b>MAV 10 G32</b>	32	<b>CAV 10 LG29</b>	29	<b>MAV 10 LG32</b>	32
with levers and gasket, top entry, high, without adapter *	<b>CFV 10 G</b>	21	<b>MFV 10 G25</b>	25	<b>CFV 10 LG21</b>	21	<b>MFV 10 LG25</b>	25
with levers and gasket, top entry, high, without adapter *	<b>CFV 10 G29</b>	29	<b>MFV 10 G32</b>	32	<b>CFV 10 LG29</b>	29	<b>MFV 10 LG32</b>	32

\* enclosure without adaptor, threaded on the body, to be used only with a complete cable gland.

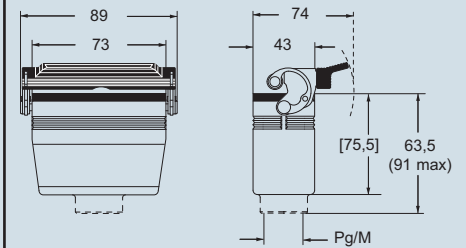
dimensions in mm

**CHV G (CAV G) and [CFV G],  
MHV G (MAV G) and [MFV G]**



dimensions in mm

**CHV LG (CAV LG) and [CFV LG],  
MHV LG (MAV LG) and [MFV LG]**



**CRUS** Type 4/4X/12



dimensions shown are not binding and may be changed without notice

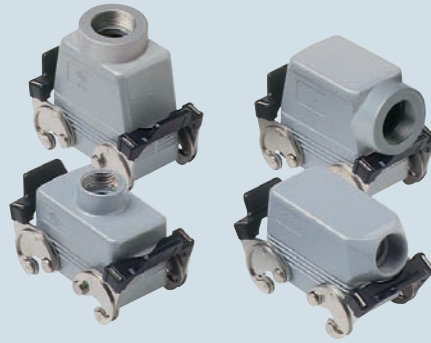
C-TYPE - size 57.27



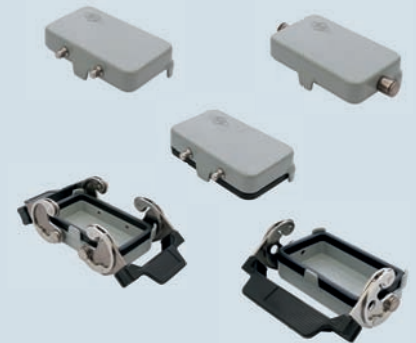
inserts:	page:
<b>CDD</b> ..... 42 poles + ⊕	69
<b>CDS</b> ..... 18 poles + ⊕	79
<b>CSH</b> ..... 10 poles + ⊕	92
<b>CNE, CSE</b> ..... 10 poles + ⊕	105
<b>CCE</b> ..... 10 poles + ⊕	111
<b>CSS</b> ..... 10 poles + ⊕	123
<b>CQE</b> ..... 18 poles + ⊕	139
<b>CMCE</b> ..... 3+2 (aux) poles + ⊕	148
<b>CMSH</b> ..... 3+2 (aux) poles + ⊕	149
<b>CX</b> ..... 8/24 poles + ⊕	169
<b>MIXO</b> ..... 3 modules	179 - 215

insert centre distance:  
57 x 27 mm

hoods with 2 levers



covers



description	part No.		part No.		part No. (with eyelet)	part No. (with loop)
		entry Pg		entry M		
with levers, side entry <sup>1)</sup>	<b>CHO 10 X</b>	16	<b>MHO 10 X20</b>	20		
with levers, side entry <sup>1)</sup>			<b>MHO 10 X25</b>	25		
with levers, side entry, high construction <sup>1)</sup>	<b>CAO 10 X</b>	21	<b>MAO 10 X32</b>	32		
with levers, side entry, high construction <sup>1)</sup>	<b>CAO 10 X29</b>	29	<b>MAO 10 X40</b>	40		
with levers, top entry <sup>1)</sup>	<b>CHV 10 X</b>	16	<b>MHV 10 X20 **</b>	20		
with levers, top entry <sup>1)</sup>			<b>MHV 10 X25</b>	25		
with levers, top entry, high construction <sup>1)</sup>	<b>CAV 10 X</b>	21	<b>MAV 10 X32</b>	32		
with levers, top entry, high construction <sup>1)</sup>	<b>CAV 10 X29</b>	29	<b>MAV 10 X40</b>	40		
with 4 pegs (for enclosures with 2 levers with gasket)					<b>CHC 10</b>	<b>CHC 10 S</b>
with 4 pegs and gasket (for enclosures with 2 levers) <sup>2)</sup>					<b>CHC 10 L</b>	<b>CHC 10 C</b>
with 2 pegs (for enclosures with 1 lever with gasket)						<b>CHC 10 SL</b>
with 2 levers (for hoods with 4 pegs)						<b>CHC 10 G</b>
with 1 lever (for hoods with 2 pegs)						<b>CHC 10 LG</b>

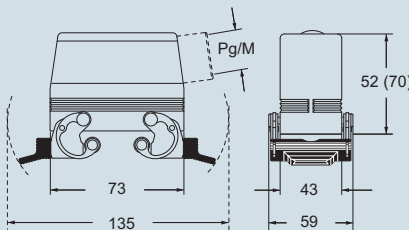
<sup>1)</sup> may be combined with enclosures:  
- CHI/CHP/CAP 10 CS/CP/C  
- MHP/MAP 10 CS/CP

**\*\* can only be used with a complete cable gland (to be purchased separately)**

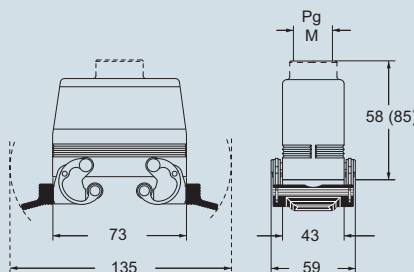
<sup>2)</sup> may be combined with enclosures:  
- CHO/CAO 10 X and CHV/CAV 10 X  
- MHO/MAO 10 X and MHV/MAV 10 X

dimensions in mm

CHO X (CAO X) and MHO X (MAO X)

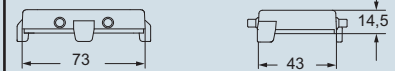


CHV X (CAV X) and MHV X (MAV X)

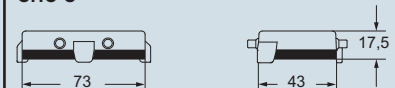


dimensions in mm

CHC (S)



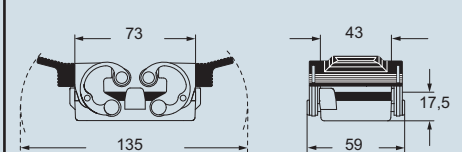
CHC C



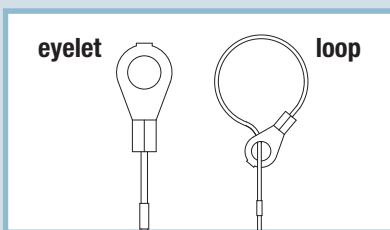
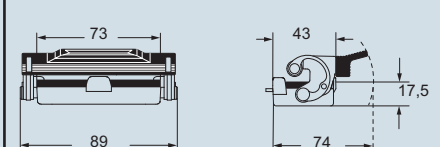
CHC L (SL)



CHC G



CHC LG



**CALUS** Type 4/4X/12



dimensions shown are not binding and may be changed without notice