

Product **Contacts: 4, Male panel mount connector, dip-soldered, PG 9**
 Area **M12-A Series 713/763**
 Article number **86 0131 0000 00004**

| Illustration | Scale drawing | Contact Arrangement | | | | | | | | | | | | | | | |
|--------------|---------------|---|--|---|---|---|------|------|---|------|------|---|-------|------|---|------|-------|
| | | <table border="1" style="margin: 10px 0;"> <thead> <tr> <th></th> <th>X</th> <th>Y</th> </tr> </thead> <tbody> <tr> <td>1</td> <td>2,50</td> <td>0,00</td> </tr> <tr> <td>2</td> <td>0,00</td> <td>2,50</td> </tr> <tr> <td>3</td> <td>-2,50</td> <td>0,00</td> </tr> <tr> <td>4</td> <td>0,00</td> <td>-2,50</td> </tr> </tbody> </table> <p style="font-size: small;">Geschirmte Versionen: Schirm auf Gehäuse Shielded versions: shield on housing</p> | | X | Y | 1 | 2,50 | 0,00 | 2 | 0,00 | 2,50 | 3 | -2,50 | 0,00 | 4 | 0,00 | -2,50 |
| | X | Y | | | | | | | | | | | | | | | |
| 1 | 2,50 | 0,00 | | | | | | | | | | | | | | | |
| 2 | 0,00 | 2,50 | | | | | | | | | | | | | | | |
| 3 | -2,50 | 0,00 | | | | | | | | | | | | | | | |
| 4 | 0,00 | -2,50 | | | | | | | | | | | | | | | |

You can find the assembly instruction on the next page.

Technical data

General features

| | |
|--------------------------|----------------------------|
| Connector Design | male panel mount connector |
| Connector locking system | bolted |
| Termination | dip-solder |
| Wire gauge (mm) | 0,25 mm ² |
| Wire gauge (AWG) | 24 |
| Upper temperature | 85 °C |
| Lower temperature | -40 °C |

Cable data

| | |
|------------|----|
| Approval 1 | UL |
|------------|----|

Electrical parameters

| | |
|-----------------------|---------------------|
| Rated voltage | 250 V |
| Rated impulse voltage | 2500 V |
| Pollution degree | 3 |
| Overvoltage category | II |
| Material group | II |
| Rated current (40°C) | 4 A |
| Volume resistivity | ≤ 3 mΩ |
| EMV compliance | not shielded |
| Degree of protection | IP68 |
| Mechanical operation | > 100 Mating cycles |

Material

| | |
|--------------------------|----------------|
| Material of contact | CuZn (Messing) |
| Contact plating | Au (gold) |
| Material of contact body | PA |

Product **Contacts: 4, Male panel mount connector, dip-soldered, PG 9**
 Area **M12-A Series 713/763**
 Article number **86 0131 0000 00004**

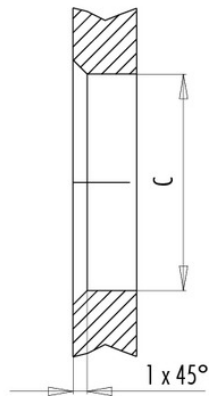
Installation instructions / Mounting cutout

Mit Fläche als Verdrehschutz
With flats as anti-rotation device

PG 9/M16 x 1,5



Mit Durchgangsbohrung
With bore hole



Mit Gewinde, einschraubbar
With thread to screw in



alternativ/alternativ

| | A | B | C |
|---------|---------|------|------|
| PG 9 | PG 9 | 16,2 | 15,3 |
| PG 13,5 | PG 13,5 | 21,5 | 20,5 |
| M16x1,5 | M16x1,5 | 17,0 | 16,1 |
| M20x1,5 | M20x1,5 | 21,0 | 20,1 |

Anzugsdrehmoment/Tightening moment

Metallgehäuse/Metal housing 6,25 Nm
 Kunststoffgehäuse/Plastic housing 3,75 Nm