



inserts:	page:
CD 64 poles + ⊕	59
CT, CTS (10A) *) 64 poles + ⊕	65
CDD 108 poles + ⊕	72
CDS 42 poles + ⊕	81
CSH 24 poles + ⊕	94
CNE, CSE 24 poles + ⊕	107
CCE 24 poles + ⊕	113
CSS 24 poles + ⊕	125
CT, CTSE (16A) *) 24 poles + ⊕	133
CQE 46 poles + ⊕	141
CQEE 64 poles + ⊕	147
CMCE 10+2 (aux) poles + ⊕	152
CMSH 10+2 (aux) poles + ⊕	153
CX 4/8 and 6/6 poles + ⊕	173 and 175
MIXO 6 modules	179-215

*) can be used only in bulkhead mounting housings

insert centre distance: 104 x 27 mm

bulkhead mounting housings with 2 levers or 4 pegs



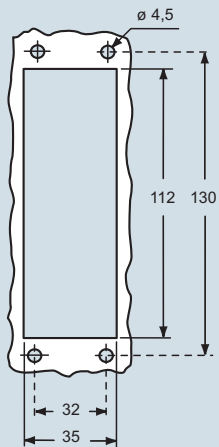
bulkhead mounting housings with single lever



description	part No.	part No.
with one or two levers	CHI 24	CHI 24 L
with pegs ¹⁾	CHI 24 C	
with pegs and aluminum cover ¹⁾	CHI 24 CS	
with pegs and plastic cover ¹⁾	CHI 24 CP	
with lever and cover		CHI 24 LS

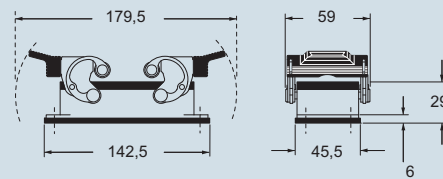
¹⁾ may be combined with enclosures:
 - CHO/CAO 24 X and CHV/CAV 24 X
 - MHO/MAO 24 X and MHV/MAV 24 X

panel cut-out for bulkhead mounting housings in mm

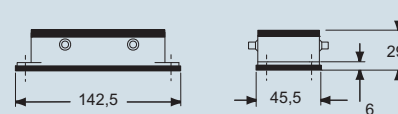


dimensions in mm

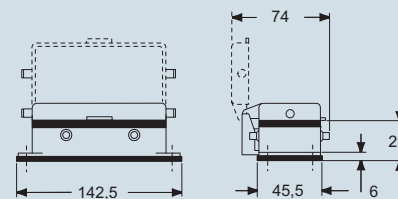
CHI



CHI C

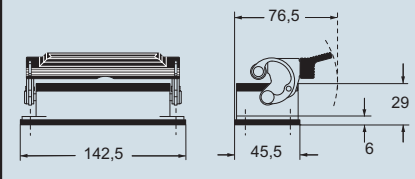


CHI CS/CP

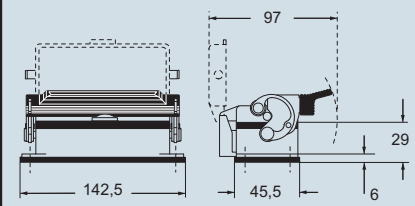


dimensions in mm

CHI L



CHI LS



NB:
 The enclosures ensure IP66 protection (or IP65 for hinged cover versions) rating when mated and locked with the closing levers.
 The cover (CS, CP) only ensures mechanical protection, but does not ensure IP65 protection rating.

CAVUS® Type 4/4X/12
 (except enclosures with plastic cover)



dimensions shown are not binding and may be changed without notice

C-TYPE - size 104.27



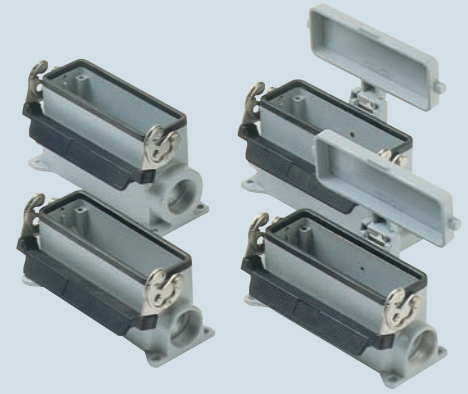
inserts:	page:
CD 64 poles + ⊕	59
CDD 108 poles + ⊕	72
CDS 42 poles + ⊕	81
CSH 24 poles + ⊕	94
CNE, CSE 24 poles + ⊕	107
CCE 24 poles + ⊕	113
CSS 24 poles + ⊕	125
CQE 46 poles + ⊕	141
CQEE 64 poles + ⊕	147
CMCE 10+2 (aux) poles + ⊕	152
CMSH 10+2 (aux) poles + ⊕	153
CX 4/8 and 6/6 poles + ⊕	173 and 175
MIXO 6 modules	179-215

insert centre distance:
104 x 27 mm

surface mounting housings with 2 levers or 4 pegs



surface mounting housings with single lever

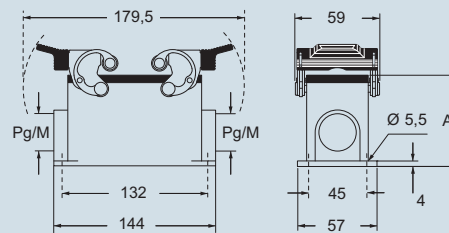


description	part No.		part No.		part No.		part No.	
	entry Pg	entry M	entry Pg	entry M	entry Pg	entry M	entry Pg	entry M
with levers	CHP 24	21	MHP 24.25	25	CHP 24 L	21	MHP 24 L25	25
with levers	CHP 24.2	21 x 2	MHP 24.225	25 x 2	CHP 24 L2	21 x 2	MHP 24 L225	25 x 2
with levers, high construction	CAP 24.21	21	MAP 24.32	32	CAP 24 L	21	MAP 24 L32	32
with levers, high construction	CAP 24.221	21 x 2	MAP 24.232	32 x 2	CAP 24 L2	21 x 2	MAP 24 L232	32 x 2
with levers, high construction	CAP 24.29	29	MAP 24.40	40	CAP 24 L29	29	MAP 24 L40	40
with levers, high construction	CAP 24.229	29 x 2	MAP 24.240	40 x 2	CAP 24 L229	29 x 2	MAP 24 L240	40 x 2
with pegs and aluminum cover ¹⁾	CHP 24 CS	21	MHP 24 CS25	25				
with pegs and aluminum cover ¹⁾	CHP 24 CS2	21 x 2	MHP 24 CS225	25 x 2				
with pegs and aluminum cover, high construction ¹⁾	CAP 24 CS	21	MAP 24 CS32	32				
with pegs and aluminum cover, high construction ¹⁾	CAP 24 CS2	21 x 2	MAP 24 CS232	32 x 2				
with pegs and aluminum cover, high construction ¹⁾	CAP 24 CS29	29	MAP 24 CS40	40				
with pegs and aluminum cover, high construction ¹⁾	CAP 24 CS229	29 x 2	MAP 24 CS240	40 x 2				
with pegs and plastic cover ¹⁾	CHP 24 CP	21	MHP 24 CP25	25				
with pegs and plastic cover ¹⁾	CHP 24 CP2	21 x 2	MHP 24 CP225	25 x 2				
with pegs and plastic cover, high construction ¹⁾	CAP 24 CP	21	MAP 24 CP32	32				
with pegs and plastic cover, high construction ¹⁾	CAP 24 CP2	21 x 2	MAP 24 CP232	32 x 2				
with pegs and plastic cover, high construction ¹⁾	CAP 24 CP29	29	MAP 24 CP40	40				
with pegs and plastic cover, high construction ¹⁾	CAP 24 CP229	29 x 2	MAP 24 CP240	40 x 2				
with lever and cover					CHP 24 LS	21	MHP 24 LS25	25
with lever and cover					CHP 24 LS2	21 x 2	MHP 24 LS225	25 x 2
with lever and cover, high construction					CAP 24 LS	21	MAP 24 LS32	32
with lever and cover, high construction					CAP 24 LS2	21 x 2	MAP 24 LS232	32 x 2
with lever and cover, high construction					CAP 24 LS29	29	MAP 24 LS40	40
with lever and cover, high construction					CAP 24 LS229	29 x 2	MAP 24 LS240	40 x 2

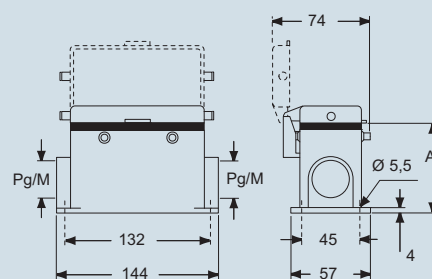
¹⁾ may be combined with enclosures:
- CHO/CAO 24 X and CHV/CAV 24 X
- MHO/MAO 24 X and MHV/MAV 24 X

dimensions in mm

CHP - CAP and MHP - MAP



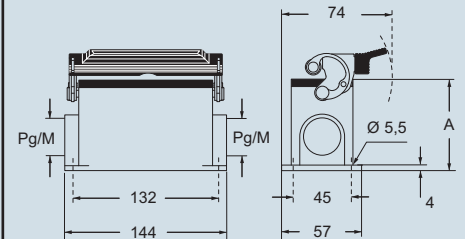
CHP CS/CP - CAP CS/CP and MHP CS/CP - MAP CS/CP



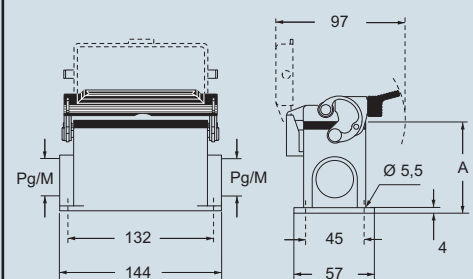
type	A
CHP / MHP	63
CAP / MAP	81
CHP CS / MHP CS	63
CAP CS / MAP CS	81
CHP CP / MHP CP	63
CAP CP / MAP CP	81

dimensions in mm

CHP L - CAP L and MHP L - MAP L



CHP LS - CAP LS and MHP LS - MAP LS



type	A
CHP L / MHP L	63
CAP L / MAP L	81
CHP LS / MHP LS	63
CAP LS / MAP LS	81

NB:
The enclosures ensure IP66 protection (or IP65 for hinged cover versions) rating when mated and locked with the closing levers.
The cover (CS, CP) only ensures mechanical protection, but does not ensure IP65 protection rating.

CALUS® Type 4/4X/12
(except enclosures with plastic cover)



dimensions shown are not binding and may be changed without notice

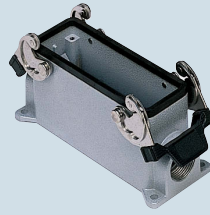


inserts:	page:
CD 64 poles + ⊕	59 *
CDD 108 poles + ⊕	72 *
CDS 42 poles + ⊕	81 *
CSH 24 poles + ⊕	94 *
CNE, CSE 24 poles + ⊕	107 *
CCE 24 poles + ⊕	113 *
CSS 24 poles + ⊕	125 *
CQE 46 poles + ⊕	141 *
CQEE 64 poles + ⊕	147 *
CMCE 10+2 (aux) poles + ⊕	152 *
CMSH 10+2 (aux) poles + ⊕	153 *
CX 4/8 and 6/6 poles + ⊕	173 and 175 *
MIXO 6 modules	179-215 *
CDSH 42 poles + ⊕	12

* refer to catalogue page CN.16

insert centre distance: 104 x 27 mm

surface mounting housings
with 2 levers



NEW

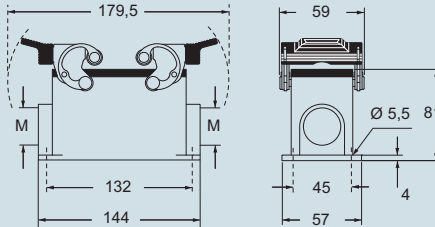


description	part No.	entry M
with levers, high construction *	MAP 24.25	25
with levers, high construction *	MAP 24.225	25 x 2

* be used only with a complete cable gland (to be purchased separately)

dimensions in mm

MAP



dimensions shown are not binding
and may be changed without notice



inserts:	page:
CD 64 poles + ⊕	59
CDD 108 poles + ⊕	72
CDS 42 poles + ⊕	81
CSH 24 poles + ⊕	94
CNE, CSE 24 poles + ⊕	107
CCE 24 poles + ⊕	113
CSS 24 poles + ⊕	125
CQE 46 poles + ⊕	141
CQEE 64 poles + ⊕	147
CMCE 10+2 (aux) poles + ⊕	152
CMSH 10+2 (aux) poles + ⊕	153
CX 4/8 and 6/6 poles + ⊕	173 and 175
MIXO 6 modules	179-215

insert centre distance:
104 x 27 mm

hoods with 4 pegs



hoods with 2 pegs



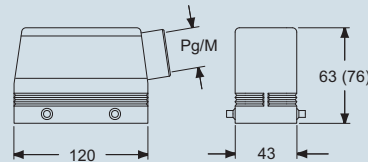
description	part No.		part No.		part No.		part No.	
		entry Pg		entry M		entry Pg		entry M
with pegs, side entry	CHO 24	21	MHO 24.25	25	CHO 24 L	21	MHO 24 L25	25
with pegs, side entry			MHO 24.32	32			MHO 24 L32	32
with pegs, side entry, high construction	CAO 24.21	21	MAO 24.32	32	CAO 24 L21	21	MAO 24 L32	32
with pegs, side entry, high construction	CAO 24.29	29	MAO 24.40	40	CAO 24 L29	29	MAO 24 L40	40
with pegs, top entry	CHV 24	21	MHV 24.25 **	25	CHV 24 L	21	MHV 24 L25	25
with pegs, top entry			MHV 24.32	32			MHV 24 L32	32
with pegs, top entry	CHV 24.29	29	MHV 24.40	40	CHV 24 L29	29	MHV 24 L40	40
with pegs, top entry, high construction	CAV 24.21	21	MAV 24.32	32	CAV 24 L21	21	MAV 24 L32	32
with pegs, top entry, high construction	CAV 24.29	29	MAV 24.40	40	CAV 24 L29	29	MAV 24 L40	40
with pegs, frontal entry, high construction	CAF 24.21	21	MAF 24.25	25				
with pegs, frontal entry, high construction	CAF 24.29	29	MAF 24.32	32				
with pegs, frontal entry, high constr., without adaptor *	CFF 24.21	21	MFF 24.25	25				
with pegs, frontal entry, high constr., without adaptor *	CFF 24.29	29	MFF 24.32	32				

* enclosure without adaptor, threaded on the body, to be used only with a complete cable gland.

** can only be used with a complete cable gland (to be purchased separately)

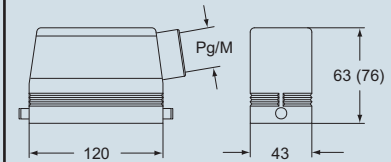
dimensions in mm

CHO (CAO) and MHO (MAO)



dimensions in mm

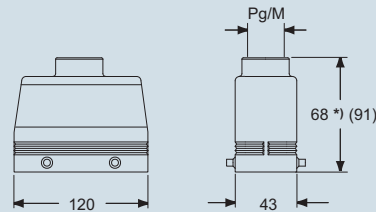
CHO L (CAO L) and MHO L (MAO L)



alternatively, hoods with pegs are coupled with fixed enclosures:

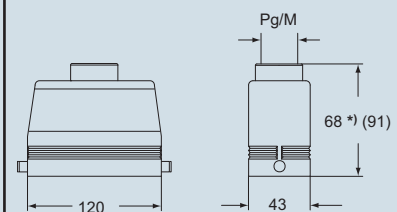
- C7, IP67 stainless steel lever, page 277
- CV, IP66 stainless steel lever, page 283 and 296

CHV (CAV) and MHV (MAV)



*) 69,5 for Pg 29 - M 40 versions

CHV L (CAV L) and MHV L (MAV L)



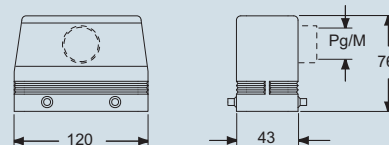
*) 69,5 for Pg 29 - M 40 versions

CALUS Type 4/4X/12



according to the type of lever

CAF/CFF and MAF/MFF



dimensions shown are not binding and may be changed without notice



inserts:	page:
CD 64 poles + ⊕	59
CDD 108 poles + ⊕	72
CDS 42 poles + ⊕	81
CSH 24 poles + ⊕	94
CNE, CSE 24 poles + ⊕	107
CCE 24 poles + ⊕	113
CSS 24 poles + ⊕	125
CQE 46 poles + ⊕	141
CQEE 64 poles + ⊕	147
CMCE 10+2 (aux) poles + ⊕	152
CMSH 10+2 (aux) poles + ⊕	153
CX 4/8 and 6/6 poles + ⊕	173 and 175
MIXO 6 modules	179-215

insert centre distance:
104 x 27 mm

hoods with double top entry and 4 pegs



hoods with double front entry and 4 pegs

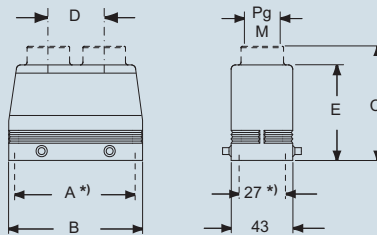


description	part No.		entry		part No.		entry	
			Pg	M			Pg	M
with pegs for two levers - used with enclosures size "104.27" - used with enclosures size "104.27"	CAV 24.221		21 x 2		MAV 24.232			
	CAV 24.229		29 x 2					
with pegs for 2 lever, without adaptor * - used with enclosures size "104.27"	CFV 24.221		21 x 2		MFV 24.232			
with pegs for two levers - used with enclosures size "104.27"					CAF 24.221		21 x 2	MAF 24.225
with pegs for 2 lever, without adaptor * - used with enclosures size "104.27"					CFF 24.221		21 x 2	MFF 24.225

* enclosure without adaptor, threaded on the body, to be used only with a complete cable gland.

dimensions in mm

CAV/CFV and MAV/MFV

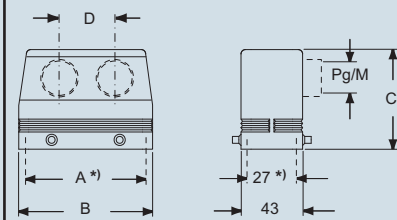


part No.	A *)	B	C	D	E
CAV 24.221/MAV 24.232	104	120	90.5 (91)	50	76
CAV 24.229	104	120	90.5	50	76
CFV 24.221/MFV 24.232	104	120	—	50	76

*) screw fixing centre distance

dimensions in mm

CAF/CFF and MAF/MFF



part No.	A *)	B	C	D
CAF/CFF 24.221 / MAF/MFF 24.225	104	120	76	50

*) screw fixing centre distance

alternatively, hoods with pegs are coupled with fixed enclosures:
- C7, IP67 stainless steel lever, page 277
- CV, IP66 stainless steel lever, page 283 and 296

CAIUS Type 4/4X/12



dimensions shown are not binding and may be changed without notice



inserts:	page:
CD 64 poles + ⊕	59
CDD 108 poles + ⊕	72
CDS 42 poles + ⊕	81
CSH 24 poles + ⊕	94
CNE, CSE 24 poles + ⊕	107
CCE 24 poles + ⊕	113
CSS 24 poles + ⊕	125
CQE 46 poles + ⊕	141
CQEE 64 poles + ⊕	147
CMCE 10+2 (aux) poles + ⊕	152
CMSH 10+2 (aux) poles + ⊕	153
CX 4/8 and 6/6 poles + ⊕	173 and 175
MIXO 6 modules	179-215

insert centre distance:
104 x 27 mm

inclined hoods for 2 levers with side entry



inclined hoods for 2 levers with top entry

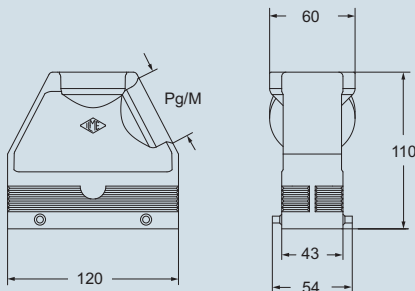


description	part No.	entry Pg	part No.	entry M	part No.	entry Pg	part No.	entry M
	used with enclosures size "104.27" - with pegs for two levers, side entry - with pegs for two levers, side entry	CIO 24.36	36	MIO 24.40 MIO 24.50	40 50			
used with enclosures size "104.27" - with pegs for two levers, top entry - with pegs for two levers, top entry					CIV 24.36	36	MIV 24.40 MIV 24.50	40 50

alternatively, hoods with pegs are coupled with fixed enclosures:
- C7, IP67 stainless steel lever, page 277
- CV, IP66 stainless steel lever, page 283 and 296

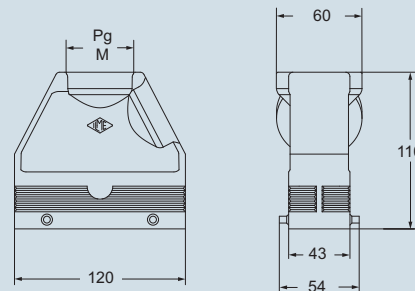
dimensions in mm

CIO and MIO



dimensions in mm

CIV and MIV



CALUS® Type 4/4X/12



according to the type of lever

dimensions shown are not binding and may be changed without notice

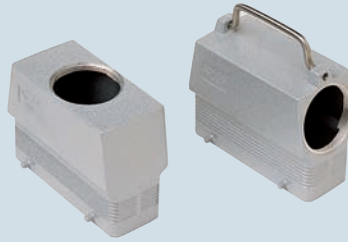
C-TYPE - size 104.27



inserts:		page:
CD	64 poles + ⊕	59
CDD	108 poles + ⊕	72
CDS	42 poles + ⊕	81
CSH	24 poles + ⊕	94
CNE, CSE	24 poles + ⊕	107
CCE	24 poles + ⊕	113
CSS	24 poles + ⊕	125
CQE	46 poles + ⊕	141
CQEE	64 poles + ⊕	147
CMCE	10+2 (aux) poles + ⊕	152
CMSH	10+2 (aux) poles + ⊕	153
CX	4/8 and 6/6 poles + ⊕	173 and 175
MIXO	6 modules	179-215

insert centre distance:
104 x 27 mm

enlarged hoods,
side or top entry with 4 pegs

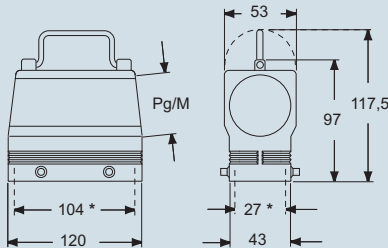


description	part No.		entry	
		Pg		M
used with enclosures size "104.27"				
- with pegs for two levers, side entry	CQO 24	36	MQO 24.40	40
- with pegs for two levers, top entry	CQV 24	36	MQV 24.40	40

alternatively, hoods with pegs are coupled with fixed enclosures:
- C7, IP67 stainless steel lever, page 277
- CV, IP66 stainless steel lever, page 283 and 296

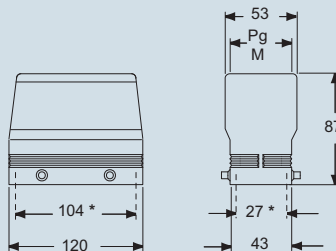
dimensions in mm

CQO and MQO



* screw fixing centre distance

CQV and MQV



*) screw fixing centre distance

CALUS® Type 4/4X/12



according to the type of lever

dimensions shown are not binding
and may be changed without notice



inserts:	page:
CD 64 poles + ⊕	59
CDD 108 poles + ⊕	72
CDS 42 poles + ⊕	81
CSH 24 poles + ⊕	94
CNE, CSE 24 poles + ⊕	107
CCE 24 poles + ⊕	113
CSS 24 poles + ⊕	125
CQE 46 poles + ⊕	141
CQEE 64 poles + ⊕	147
CMCE 10+2 (aux) poles + ⊕	152
CMSH 10+2 (aux) poles + ⊕	153
CX 4/8 and 6/6 poles + ⊕	173 and 175
MIXO 6 modules	179-215

insert centre distance:
104 x 27 mm

hoods with 2 levers



hoods with 1 lever

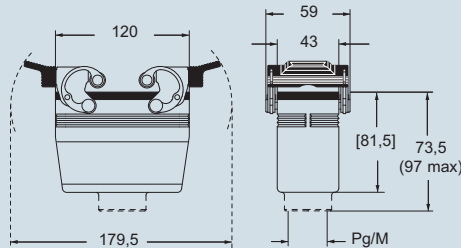


description	part No.		entry Pg		part No.		entry M	
with levers and gasket, top entry	CHV 24 G	21	MHV 24 G32	32	CHV 24 LG	21	MHV 24 LG32	32
with levers and gasket, top entry, high construction	CAV 24 G	21	MAV 24 G25	25	CAV 24 LG21	21	MAV 24 LG25	25
with levers and gasket, top entry, high construction	CAV 24 G29	29	MAV 24 G32	32	CAV 24 LG29	29	MAV 24 LG32	32
with levers and gasket, top entry, high construction			MAV 24 G40	40			MAV 24 LG40	40
with levers and gasket, top entry, high, without adaptor *	CFV 24 G	21	MFV 24 G25	25	CFV 24 LG21	21	MFV 24 LG25	25
with levers and gasket, top entry, high, without adaptor *	CFV 24 G29	29	MFV 24 G32	32	CFV 24 LG29	29	MFV 24 LG32	32
with levers and gasket, top entry, high, without adaptor *			MFV 24 G40	40			MFV 24 LG40	40

* enclosure without adaptor, threaded on the body, to be used only with a complete cable gland.

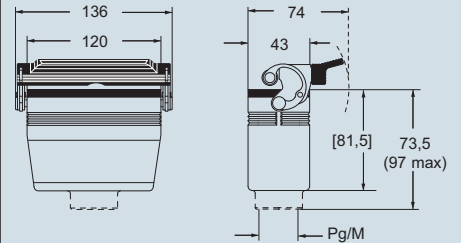
dimensions in mm

**CHV G (CAV G) and [CFV G],
MHV G (MAV G) and [MFV G]**



dimensions in mm

**CHV LG (CAV LG) and [CFV LG],
MHV LG (MAV LG) and [MFV LG]**



CALUS Type 4/4X/12



dimensions shown are not binding and may be changed without notice

C-TYPE - size 104.27



inserts:		page:
CD	64 poles + ⊕	59
CDD	108 poles + ⊕	72
CDS	42 poles + ⊕	81
CSH	24 poles + ⊕	94
CNE, CSE	24 poles + ⊕	107
CCE	24 poles + ⊕	113
CSS	24 poles + ⊕	125
CQE	46 poles + ⊕	141
CQEE	64 poles + ⊕	147
CMCE	10+2 (aux) poles + ⊕	152
CMSH	10+2 (aux) poles + ⊕	153
CX	4/8 and 6/6 poles + ⊕	173 and 175
MIXO	6 modules	179-215

insert centre distance:
104 x 27 mm

hoods for ribbon cable with 4 pegs



gaskets for ribbon cable hood



description

part No.

part No.

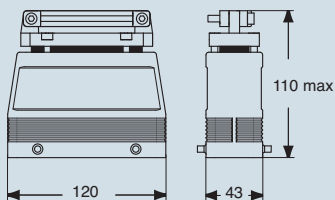
with pegs, top entry

CAN 24

ribbon cable seals (supplied separately)
 - one slot for cable sizes 18.8 x 5.8 mm
 - one slot for cable sizes 63.8 x 5.1 mm
 - one slot for cable sizes 36 x 9 mm
 - not pre-drilled

CRN 1
CRN 2
CRN 3
CRN P

dimensions in mm



CRUS® Type
 4/4X/12

dimensions shown are not binding
 and may be changed without notice

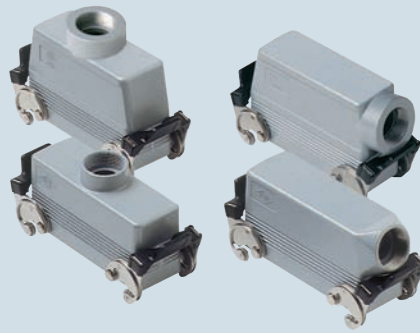
C-TYPE - size 104.27



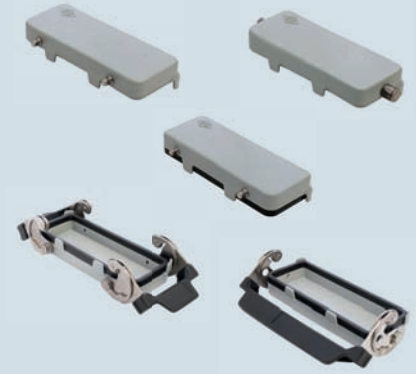
inserts:	page:
CD 64 poles + ⊕	59
CDD 108 poles + ⊕	72
CDS 42 poles + ⊕	81
CSH 24 poles + ⊕	94
CNE, CSE 24 poles + ⊕	107
CCE 24 poles + ⊕	113
CSS 24 poles + ⊕	125
CQE 46 poles + ⊕	141
CQEE 64 poles + ⊕	147
CMCE 10+2 (aux) poles + ⊕	152
CMSH 10+2 (aux) poles + ⊕	153
CX 4/8 and 6/6 poles + ⊕	173 and 175
MIXO 6 modules	179-215

insert centre distance:
104 x 27 mm

hoods with 2 levers



covers



description	part No.	entry Pg	part No.	entry M	part No. (with eyelet)	part No. (with loop)
with levers, side entry ¹⁾	CHO 24 X	21	MHO 24 X25	25		
with levers, side entry ¹⁾			MHO 24 X32	32		
with levers, side entry, high construction ¹⁾	CAO 24 X	21	MAO 24 X32	32		
with levers, side entry, high construction ¹⁾	CAO 24 X29	29	MAO 24 X40	40		
with levers, top entry ¹⁾	CHV 24 X	21	MHV 24 X25	25		
with levers, top entry ¹⁾			MHV 24 X32	32		
with levers, top entry, high construction ¹⁾	CAV 24 X	21	MAV 24 X32	32		
with levers, top entry, high construction ¹⁾	CAV 24 X29	29	MAV 24 X40	40		
with 4 pegs (for enclosures with 2 levers with gasket)					CHC 24	CHC 24 S
with 4 pegs and gasket (for enclosures with 2 levers) ²⁾						CHC 24 C
with 2 pegs (for enclosures with 1 lever with gasket)					CHC 24 L	CHC 24 SL
with 2 levers (for hoods with 4 pegs)						CHC 24 G
with 1 lever (for hoods with 2 pegs)						CHC 24 LG

¹⁾ may be combined with enclosures:
- CHI/CHP/CAP 24 CS/CP/C
- MHP/MAP 24 CS/CP

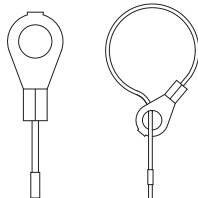
²⁾ may be combined with enclosures:
- CHO/CAO 24 X and CHV/CAV 24 X
- MHO/MAO 24 X and MHV/MAV 24 X

dust protection cover



CHCP 24 page 496

eyelet loop



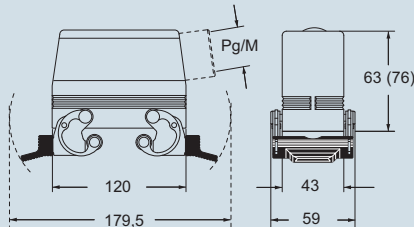
CALUS Type 4/4X/12



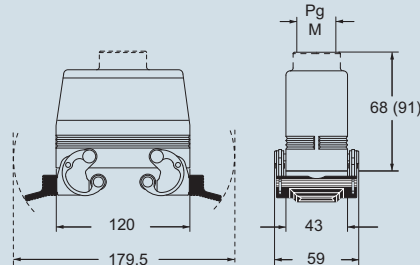
dimensions shown are not binding and may be changed without notice

dimensions in mm

CHO X (CAO X) and MHO X (MAO X)

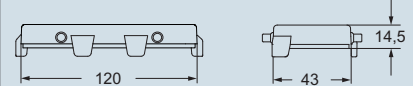


CHV X (CAV X) and MHV X (MAV X)



dimensions in mm

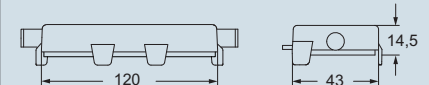
CHC (S)



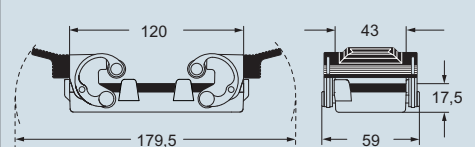
CHC C



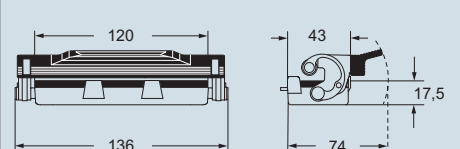
CHC L (SL)



CHC G



CHC LG



C-TYPE - size 104.27