

Product Pole	Contacts: 4, female cable connector 4	Area Article number	Bayonet IP40 Series 710 99 0980 102 04
--------------	---	---------------------	--

Illustration	Scale drawing	Contact Arrangement															
		<table border="1" style="margin-left: auto; margin-right: auto;"> <thead> <tr> <th></th> <th>X</th> <th>Y</th> </tr> </thead> <tbody> <tr> <td>1</td> <td>-1,10</td> <td>-1,10</td> </tr> <tr> <td>2</td> <td>-1,10</td> <td>1,10</td> </tr> <tr> <td>3</td> <td>1,10</td> <td>1,10</td> </tr> <tr> <td>4</td> <td>1,10</td> <td>-1,10</td> </tr> </tbody> </table>		X	Y	1	-1,10	-1,10	2	-1,10	1,10	3	1,10	1,10	4	1,10	-1,10
	X	Y															
1	-1,10	-1,10															
2	-1,10	1,10															
3	1,10	1,10															
4	1,10	-1,10															

You can find the item description on the next page.

Technical data

Common values

Connector Design	Female cable connector
Connector locking system	Bayonet
Termination	Solder
Wire gauge (mm)	0.25 mm ²
Wire gauge (AWG)	24
Cable outlet	4 - 5 mm
Upper temperature	85 °C
Lower temperature	-40 °C

Cable data

material housing	-
Insulation single lead	-
Single lead structure	-
Conductor resistance	-

Electrical values

Rated voltage	125 V
Rated impulse voltage	1500 V
Pollution degree	1
Overvoltage category	II
Material group	III
Rated current (40°C)	3 A
Volume resistivity	≤ 3 mΩ
EMV compliance	not shieldable
Degree of protection	IP40
Mechanical operation	> 500 mating cycles

Material

Material of contact	CuSn (Bronze)
Contact plating	Au (Gold)
Material of contact body	PA (UL 94 V-0)
Material of housing	PA (UL 94 HB)

Contacts: 4, female cable connector, cable outlet 4 -5 mm

Product
Pole

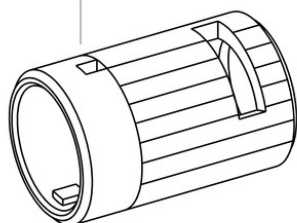
Contacts: 4, female cable connector
4

Area
Article number

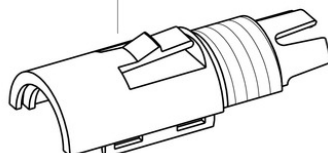
Bayonet IP40 Series 710
99 0980 102 04

Item description

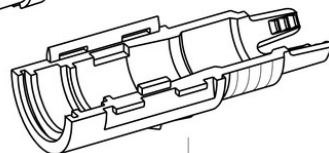
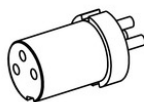
Gewinding Dose
connection ring female connector



Trägerhalbschale-Oberteil (schwarz)
carrier sleeve part 1 (black)



Buchseneinsatz
female insert



Trägerhalbschale-Unterteil (grau)
carrier sleeve part 2 (grey)

Druckschraube
pressing screw

