



inserts:	page:
<b>CME</b> ..... 10+2 (aux) poles + ⊕	153
<b>CMCE</b> ..... 16+2 (aux) poles + ⊕	158
<b>CME</b> ..... 16+2 (aux) poles + ⊕	159

insert centre distance:  
104 x 27 mm

**bulkhead mounting housings with 2 levers**

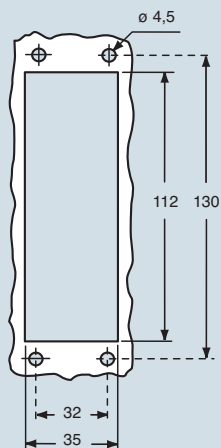


**bulkhead mounting housings with single lever**



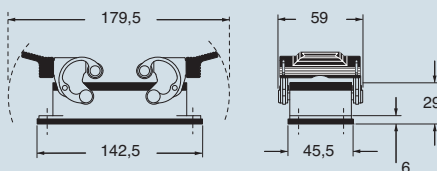
description	part No.	part No.
with one or two levers	<b>CMI 16</b>	<b>CMI 16 L</b>
with lever and cover		<b>CMI 16 LS</b>

panel cut-out for bulkhead mounting housings in mm



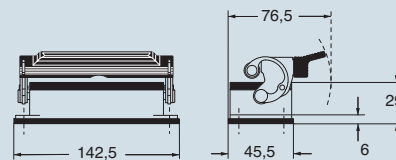
dimensions in mm

**CMI**

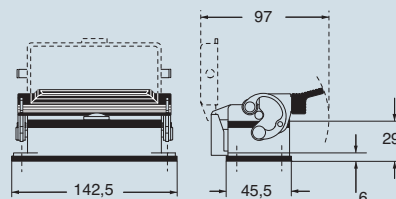


dimensions in mm

**CMI L**



**CMI LS**



**NB:**  
The enclosures ensure IP66 protection (or IP65 for cover versions) rating when mated and locked with the closing levers.

**CALUS**® Type 4/4X/12



dimensions shown are not binding and may be changed without notice

830V - size 104.27



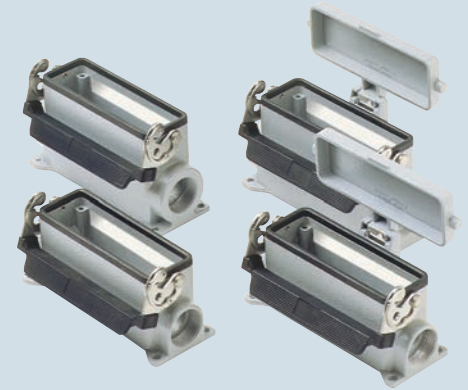
inserts:	page:
<b>CME</b> ..... 10+2 (aux) poles + ⊕	153
<b>CMCE</b> ..... 16+2 (aux) poles + ⊕	158
<b>CME</b> ..... 16+2 (aux) poles + ⊕	159

insert centre distance:  
104 x 27 mm

surface mounting housings with 2 levers



surface mounting housings with single lever

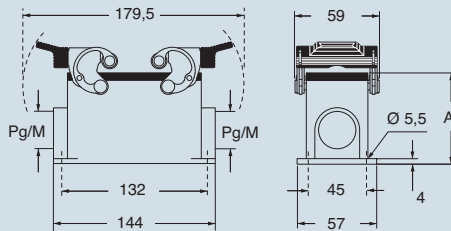


description	part No.		entry Pg		part No.		entry M	
with levers	<b>CMP 16</b>	21	<b>MMP 16.25</b>	25	<b>CMP 16 L</b>	21	<b>MMP 16 L25</b>	25
with levers	<b>CMP 16.2</b>	21 x 2	<b>MMP 16.225</b>	25 x 2	<b>CMP 16 L2</b>	21 x 2	<b>MMP 16 L225</b>	25 x 2
with levers, high construction			<b>MMAP 16.32</b>	32			<b>MMAP 16 L32</b>	32
with levers, high construction			<b>MMAP 16.232</b>	32 x 2			<b>MMAP 16 L232</b>	32 x 2
with levers, high construction			<b>MMAP 16.40</b>	40			<b>MMAP 16 L40</b>	40
with levers, high construction			<b>MMAP 16.240</b>	40 x 2			<b>MMAP 16 L240</b>	40 x 2
with lever and cover					<b>CMP 16 LS</b>	21	<b>MMP 16 LS25</b>	25
with lever and cover					<b>CMP 16 LS2</b>	21 x 2	<b>MMP 16 LS225</b>	25 x 2
with lever and cover, high construction							<b>MMAP 16 LS32</b>	32
with lever and cover, high construction							<b>MMAP 16LS232</b>	32 x 2
with lever and cover, high construction							<b>MMAP 16 LS40</b>	40
with lever and cover, high construction							<b>MMAP 16LS240</b>	40 x 2

**NB:**  
The enclosures ensure IP66 protection (or IP65 for cover versions) rating when mated and locked with the closing levers.  
The cover (CS, CP) only ensures mechanical protection, but does not ensure IP65 protection rating.

dimensions in mm

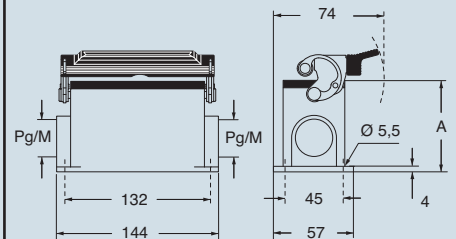
CMP and MMP - MMAP



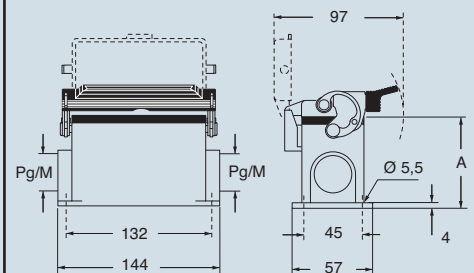
type	<b>A</b>
<b>CMP / MMP</b>	63
<b>MMAP</b>	81

dimensions in mm

CMP L and MMP L - MMAP L



CMP LS and MMP LS - MMAP LS



type	<b>A</b>
<b>CMP L / MMP L</b>	63
<b>MMAP L</b>	81
<b>CMP LS / MMP LS</b>	63
<b>MMAP LS</b>	81

**CALUS** Type 4/4X/12



dimensions shown are not binding and may be changed without notice

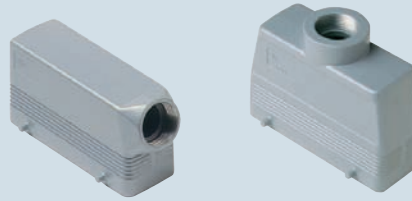
830V - size 104.27



inserts:	page:
<b>CME</b> ..... 10+2 (aux) poles + ⊕	153
<b>CMCE</b> ..... 16+2 (aux) poles + ⊕	158
<b>CME</b> ..... 16+2 (aux) poles + ⊕	159

insert centre distance:  
104 x 27 mm

hoods with 4 pegs



hoods with 2 pegs

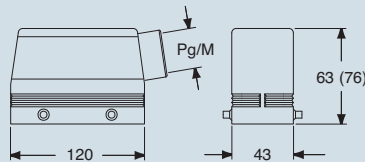


description	part No.		part No.		part No.		part No.	
		entry Pg		entry M		entry Pg		entry M
with pegs, side entry	<b>CMO 16</b>	21	<b>MMO 16.25</b>	25	<b>CMO 16 L</b>	21	<b>MMO 16 L25</b>	25
with pegs, side entry			<b>MMO 16.32</b>	32			<b>MMO 16 L32</b>	32
with pegs, side entry, high construction			<b>MMAO 16.32</b>	32			<b>MMAO 16 L32</b>	32
with pegs, side entry, high construction			<b>MMAO 16.40</b>	40			<b>MMAO 16 L40</b>	40
with pegs, top entry	<b>CMV 16</b>	21	<b>MMV 16.25 *</b>	25	<b>CMV 16 L</b>	21	<b>MMV 16 L25</b>	25
with pegs, top entry			<b>MMV 16.32</b>	32			<b>MMV 16 L32</b>	32
with pegs, top entry			<b>MMV 16.40</b>	40			<b>MMV 16 L40</b>	40
with pegs, top entry, high construction			<b>MMAV 16.32</b>	32			<b>MMAV 16 L32</b>	32
with pegs, top entry, high construction			<b>MMAV 16.40</b>	40			<b>MMAV 16 L40</b>	40
	<b>CMV 16.29</b>	29			<b>CMV 16 L29</b>	29		

\* can only be used with a complete cable gland (to be purchased separately)

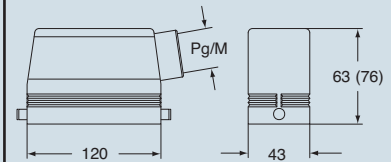
dimensions in mm

CMO and MMO (MMAO)

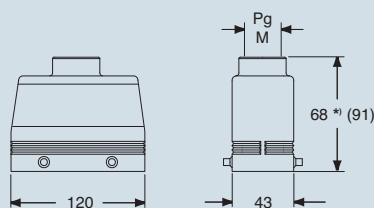


dimensions in mm

CMO L and MMO L (MMAO L)

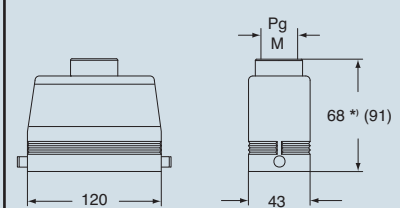


CMV and MMV (MMAV)



\*) 69,5 for Pg 29 - M 40 versions

CMV L and MMV L (MMAV L)



\*) 69,5 for Pg 29 - M 40 versions

**CALUS** Type 4/4X/12



dimensions shown are not binding and may be changed without notice



inserts:	page:
<b>CME</b> ..... 10+2 (aux) poles + ⊕	153
<b>CMCE</b> ..... 16+2 (aux) poles + ⊕	158
<b>CME</b> ..... 16+2 (aux) poles + ⊕	159

insert centre distance:  
104 x 27 mm

hoods with 2 levers



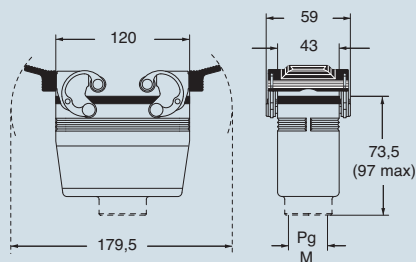
covers



description	part No.		part No.		part No. (with eyelet)		part No. (with loop)	
		entry Pg		entry M		entry		entry
with levers and gasket, top entry	<b>CMV 16 G</b>	21	<b>MMV 16 G32</b>	32				
with levers and gasket, top entry, high construction			<b>MMAV 16 G25</b>	25				
with levers and gasket, top entry, high construction			<b>MMAV 16 G32</b>	32				
with 4 pegs (for enclosures with 2 levers with gasket)					<b>CHC 24</b>			
with 2 pegs (for enclosures with 1 lever with gasket)					<b>CHC 24 L</b>			
with 2 levers (for hoods with 4 pegs)							<b>CHC 24 G</b>	
with 1 lever (for hoods with 2 pegs)							<b>CHC 24 LG</b>	

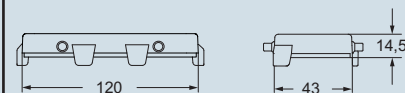
dimensions in mm

CMV G and MMV G (MMAV G)

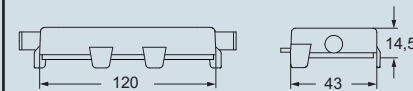


dimensions in mm

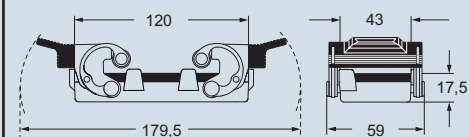
CHC



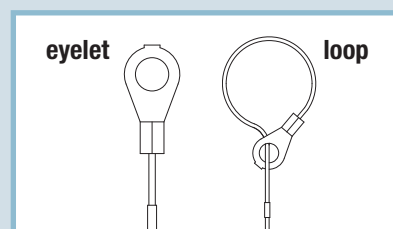
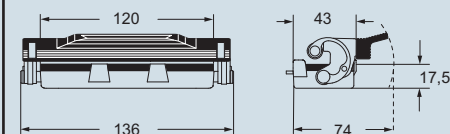
CHC L



CHC G



CHC LG



**CALUS** Type 4/4X/12



dimensions shown are not binding and may be changed without notice

830V - size 104.27