



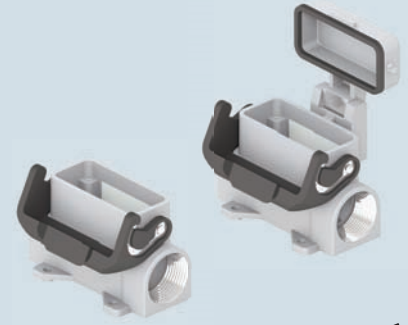
inserts:		page:
CD	15 poles + ⊕	55
CSAH	10 poles + ⊕	87
CDA	10 poles + ⊕	98
CDC	10 poles + ⊕	99
MIXO	1 module	179 - 214

bulkhead mounting housings with single lever



NEW

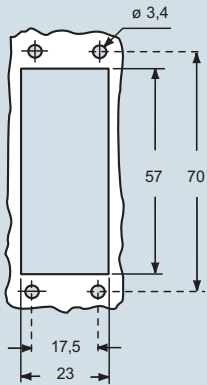
surface mounting housings with single lever



NEW

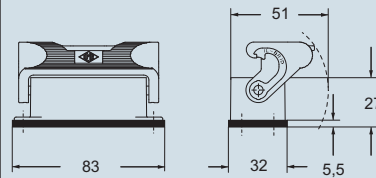
description	part No.	part No.	entry Pg	part No.	entry M
with single lever	CZI 15 L				
with single lever and cover	CZI 15 LS				
with single lever		CZP 15 L	16		
with single lever		CZP 15 L2	16 x 2		
with single lever		CZP 15 LS21	21	MZP 15 LS25	25
with single lever		CZP 15 L221	21 x 2	MZP 15 L225	25 x 2
with lever and cover		CZP 15 LS	16		
with lever and cover		CZP 15 LS2	16 x 2		
with lever and cover		CZP 15 LS21	21	MZP 15 LS25	25
with lever and cover		CZP 15 LS221	21 x 2	MZP 15 LS25	25 x 2

panel cut-out for bulkhead mounting housings in mm

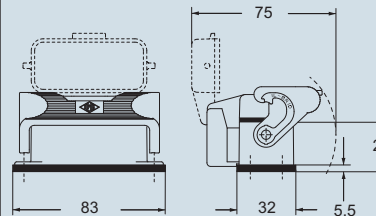


dimensions in mm

CZI L

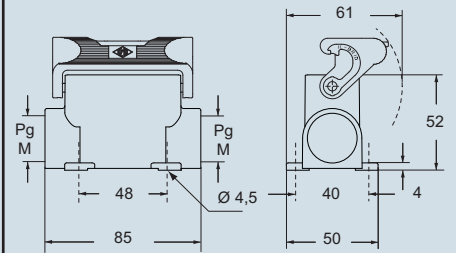


CZI LS

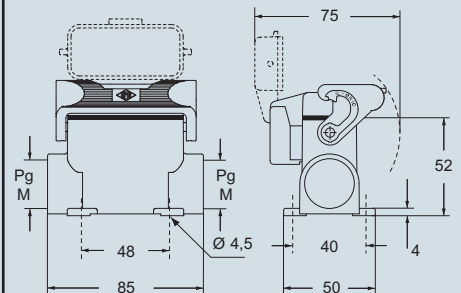


dimensions in mm

CZP L and MZP L



CZP LS and MZP LS



N.B.:
The enclosures ensure IP66 protection (or IP65 for hinged cover versions) rating when mated and locked with the closing levers.

CALUS Type 4/4X/12



dimensions shown are not binding and may be changed without notice

IL-BRID - size 49.16

inserts:	page:
CD 15 poles + ⊕	55
CSAH 10 poles + ⊕	87
CDA 10 poles + ⊕	98
CDC 10 poles + ⊕	99
MIXO 1 module	179 - 214

refer to catalogue page CN.16

insert centre distance:
49 x 16 mm

**bulkhead mounting housings
with 1 lever**



**IL-BRID
lever**

NEW

description	part No.
with single lever and cover	CZI 15 LSP

panel cut-out for bulkhead mounting housings in mm	dimensions in mm
	<p>CZI LSP</p>

N.B.:
The enclosures ensure IP65 protection rating when mated and locked with the closing levers.

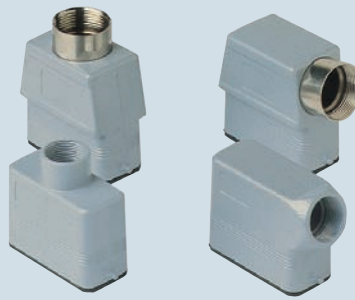


dimensions shown are not binding
and may be changed without notice



inserts:		page:
CD	15 poles + ⊕	55
CSAH	10 poles + ⊕	87
CDA	10 poles + ⊕	98
CDC	10 poles + ⊕	99
MIXO	1 module	179 - 214

hoods with 2 pegs



hoods with single lever



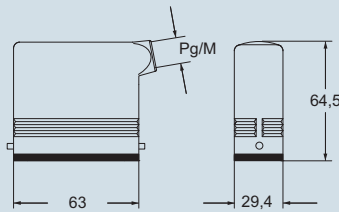
NEW

description	part No.		part No.		part No.		part No.	
		entry Pg		entry M		entry Pg		entry M
with pegs, side entry	CZO 15 L	16	MZO 15 L20	20				
with pegs, side entry			MZO 15 L25	25				
with pegs, side entry, high construction	CZAO 15 L16	16	MZAO 15 L20	20				
with pegs, side entry, high construction	CZAO 15 L21	21	MZAO 15 L25	25				
with pegs, top entry	CZV 15 L	13.5	MZV 15 L20	20				
with pegs, top entry, high construction	CZAV 15 L16	16	MZAV 15 L20	20				
with pegs, top entry, high construction	CZAV 15 L21	21	MZAV 15 L25	25				
with pegs, side entry, high construction, without adaptor *	CZFO 15 L16	16	MZFO 15 L20	20				
with pegs, side entry, high construction, without adaptor *	CZFO 15 L21	21	MZFO 15 L25	25				
with pegs, top entry, high construction, without adaptor *	CZFV 15 L16	16	MZFV 15 L20	20				
with pegs, top entry, high construction, without adaptor *	CZFV 15 L21	21	MZFV 15 L25	25				
with lever, top entry					CZV 15 LG	13,5	MZV 15 LG20	20

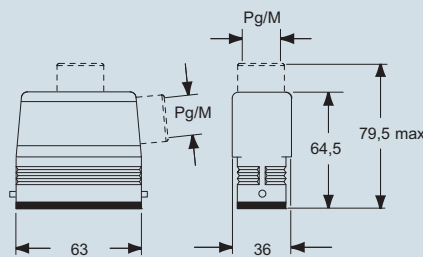
* enclosure without adaptor, threaded on the body, to be used only with a complete cable gland.

dimensions in mm

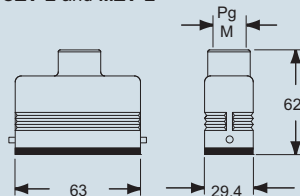
CZO L and MZO L



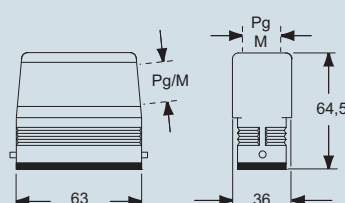
CZAO L - MZAO L and CZAV L - MZAV L



CZV L and MZV L

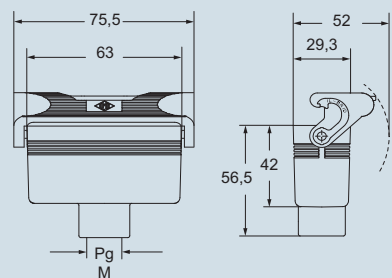


CZFO L - MZFO L and CZFV L - MZFV L



dimensions in mm

CZV LG and MZV LG



CALUS Type 4/4X/12



dimensions shown are not binding and may be changed without notice

IL-BRID - size 49.16



inserts:	page:
CD 15 poles + ⊕	55
CSAH 10 poles + ⊕	87
CDA 10 poles + ⊕	98
CDC 10 poles + ⊕	99
MIXO 1 module	179 - 214

covers



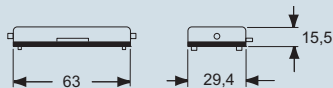
NEW

Cover versions L and LG cannot be used together with coding pins. If this application is required, please contact ILME SpA.

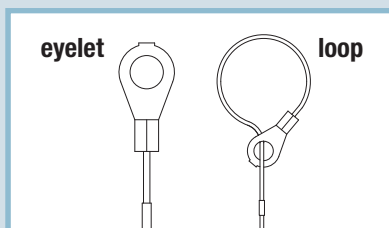
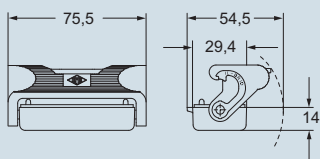
description	part No. (with eyelet)	part No. (with loop)
with pegs (for 1 lever enclosures)	CZC 15 L	CZC 15 SL
with lever (for enclosures with pegs)		CZC 15 LG

dimensions in mm

CZC L (SL)



CZC LG



CALUS Type 4/4X/12



dimensions shown are not binding and may be changed without notice

IL-BRID - size 49.16